

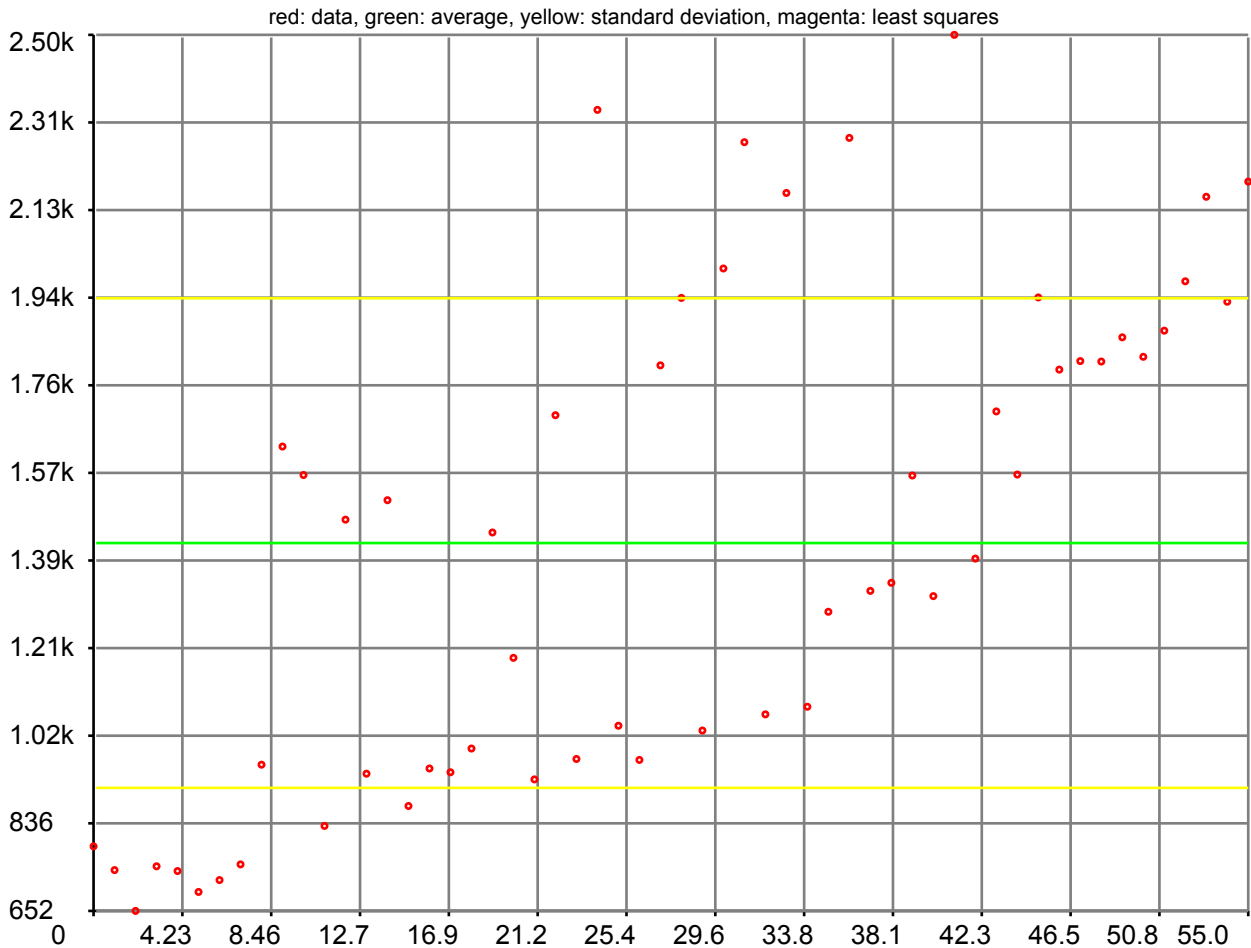


index

- 1 : global information
- 2 : index
- 3 : RPM versus speed
- 4 : vehicle speed versus GPS speed
- 5 : RPM divided by throttle percentage
- 6 : absolute load value
- 9 : ambient air temperature
- 12: battery voltage
- 15: catalyst temperature bank 1 sensor 1
- 18: commanded evaporative purge
- 21: control module voltage
- 24: coolant temperature
- 27: engine load
- 30: RPM
- 33: fuel level input
- 36: intake air temperature
- 39: intake manifold absolute pressure
- 42: long term fuel bank 1
- 45: oxygen sensor bank 1 sensor 1
- 48: oxygen sensor bank 1 sensor 2
- 51: relative throttle position
- 54: short term fuel bank 1
- 57: throttle
- 60: timing advance
- 63: speed



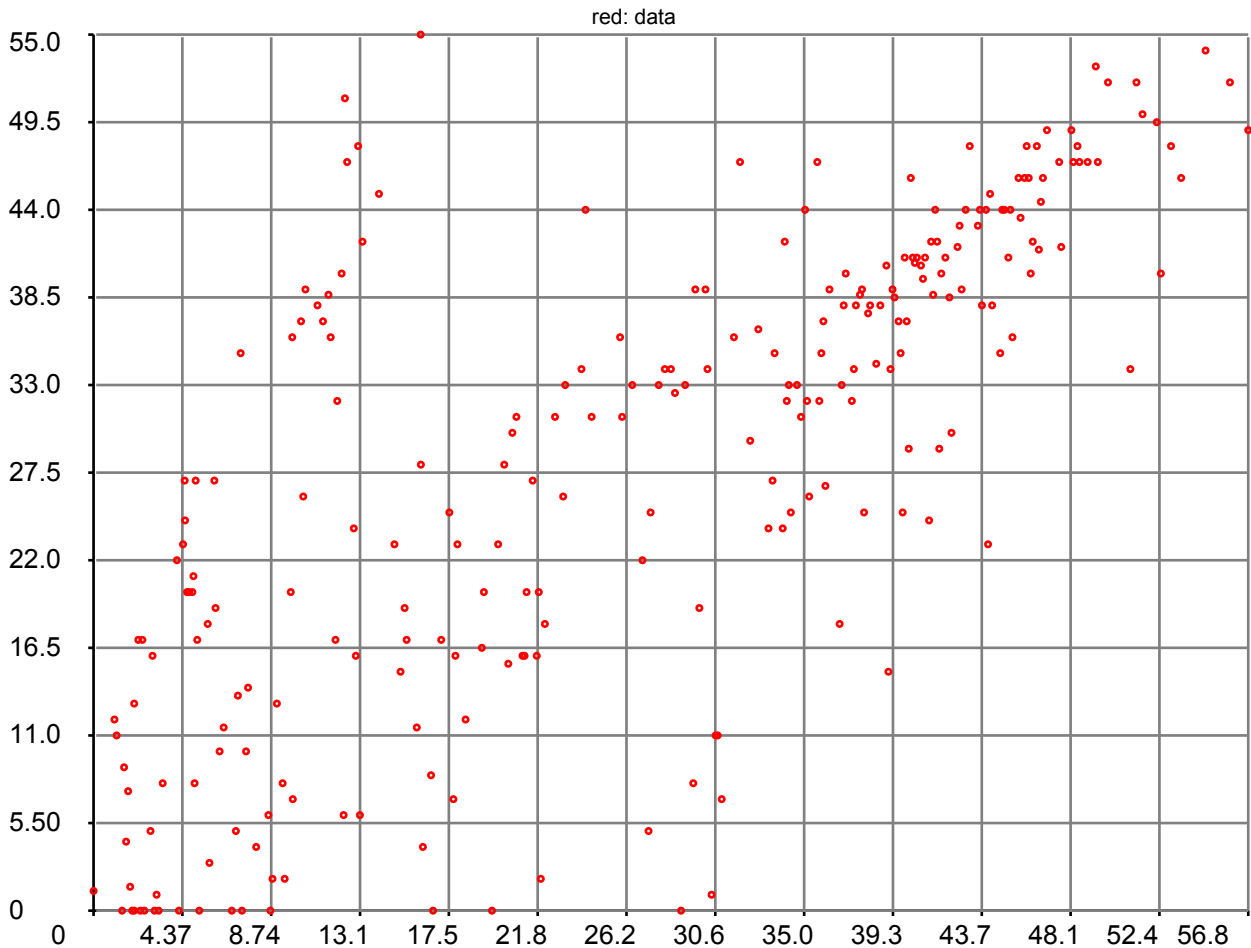
RPM versus speed



x units : km/h
y units : RPM
description : RPM versus speed
data count : 56
x min : 0.000000
x max : 55.000000
y min : 652.000000
y max : 2497.000000
x average : 27.500000
y average : 1426.767857
x standard deviation: 16.163230
y standard deviation: 515.600482



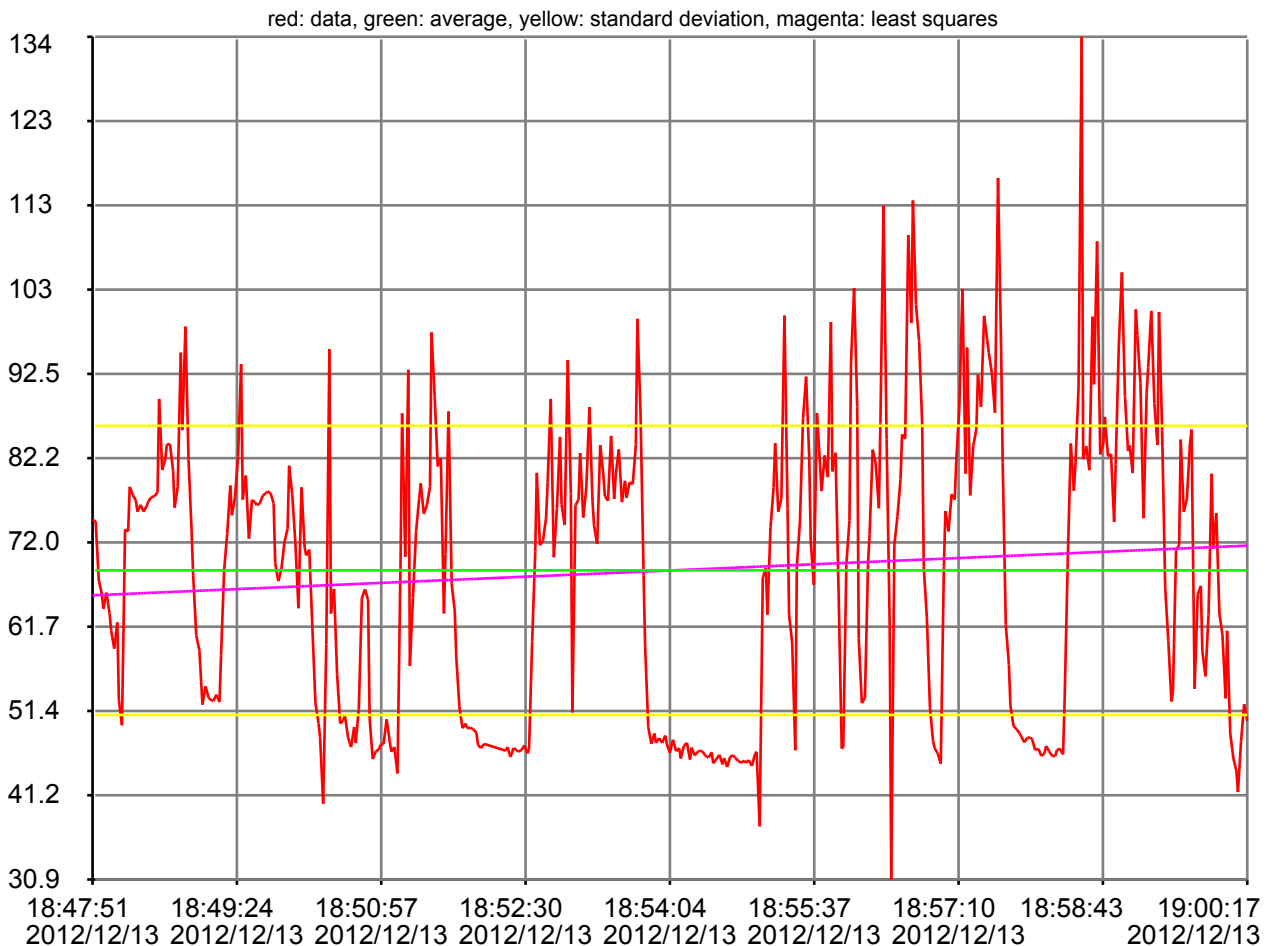
vehicle speed versus GPS speed



x units : km/h (GPS)
y units : km/h (vehicle)
description : vehicle speed versus GPS speed
data count : 250
x min : 0.000000
x max : 56.800000
y min : 0.000000
y max : 55.000000
x average : 26.664167
y average : 28.100948
x standard deviation: 16.012690
y standard deviation: 15.299366



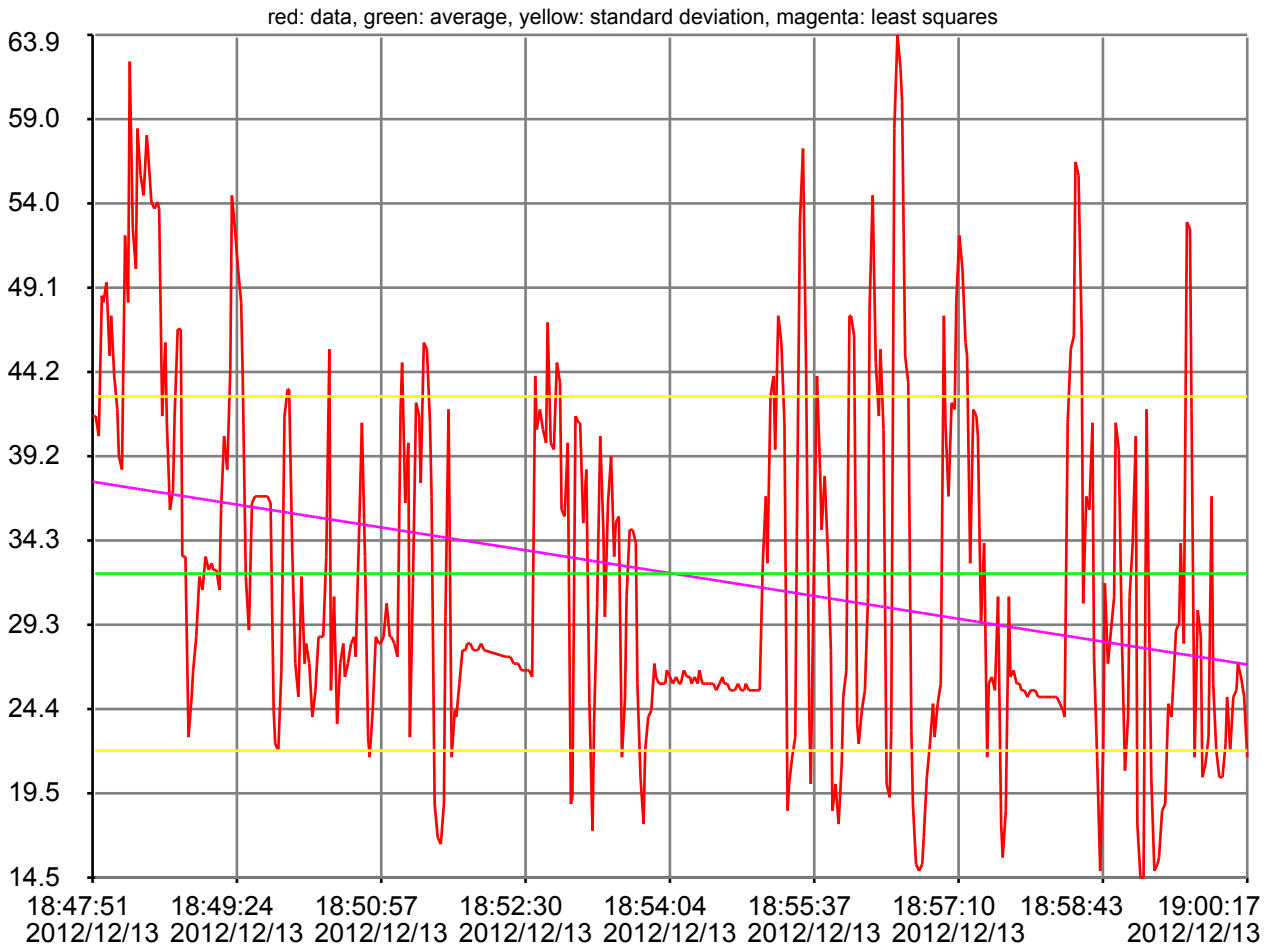
RPM divided by throttle percentage



data type min : 0.000000
data type max : 41778.537000
data units : RPM/throttle%
description : RPM divided by throttle percentage
measurement count: 420
data min : 30.918755
data max : 133.531710
first measurement : Thu, 13 Dec 2012 18:47:51 +0100
last measurement : Thu, 13 Dec 2012 19:00:17 +0100
measuring duration : 00:12:26
average : 68.562760
standard deviation : 17.603587



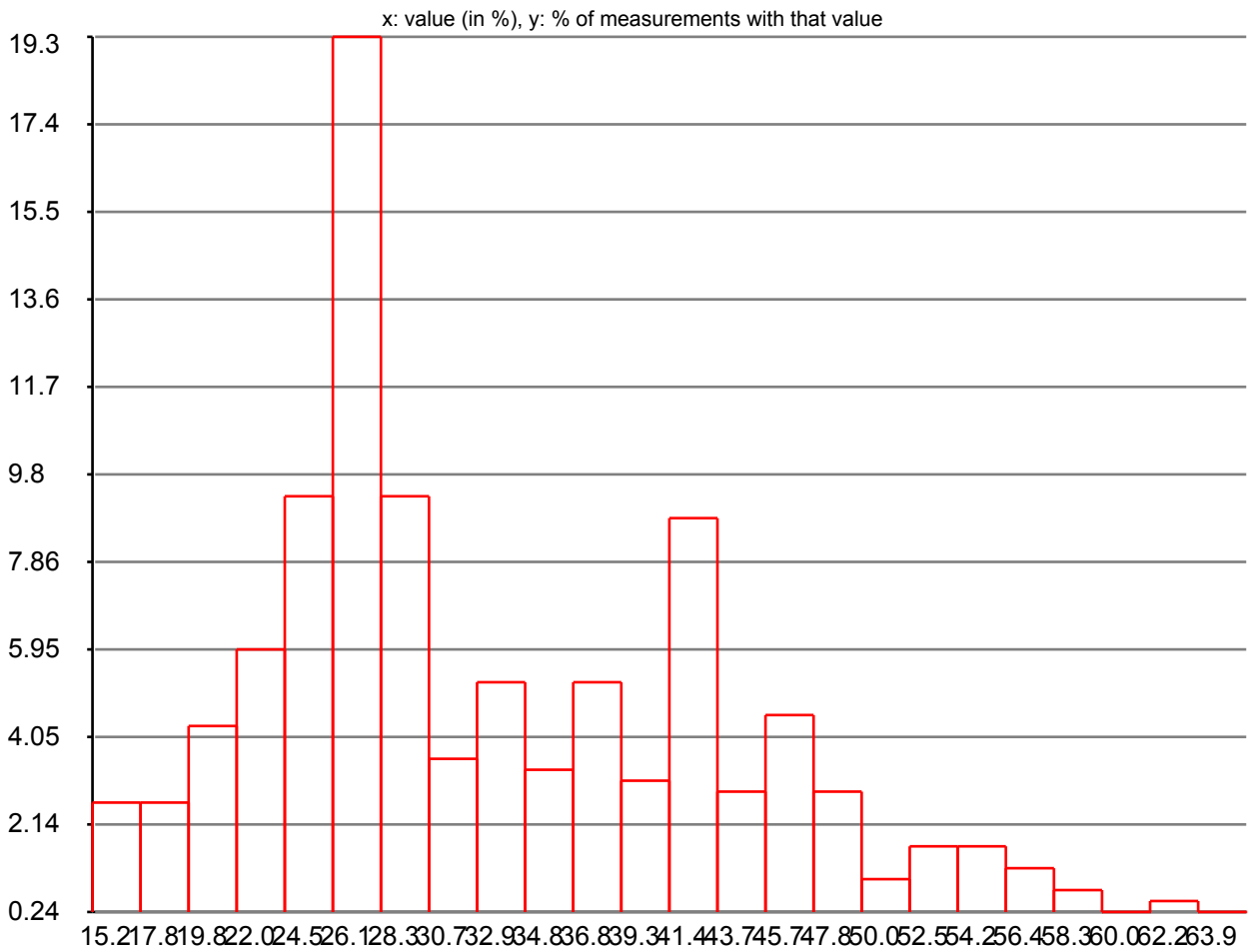
absolute load value



data type min : 0.000000
data type max : 25700.000000
data units : %
description : absolute load value
measurement count: 420
data min : 14.509800
data max : 63.921570
first measurement : Thu, 13 Dec 2012 18:47:51 +0100
last measurement : Thu, 13 Dec 2012 19:00:17 +0100
measuring duration : 00:12:26
average : 32.335201
standard deviation : 10.381919

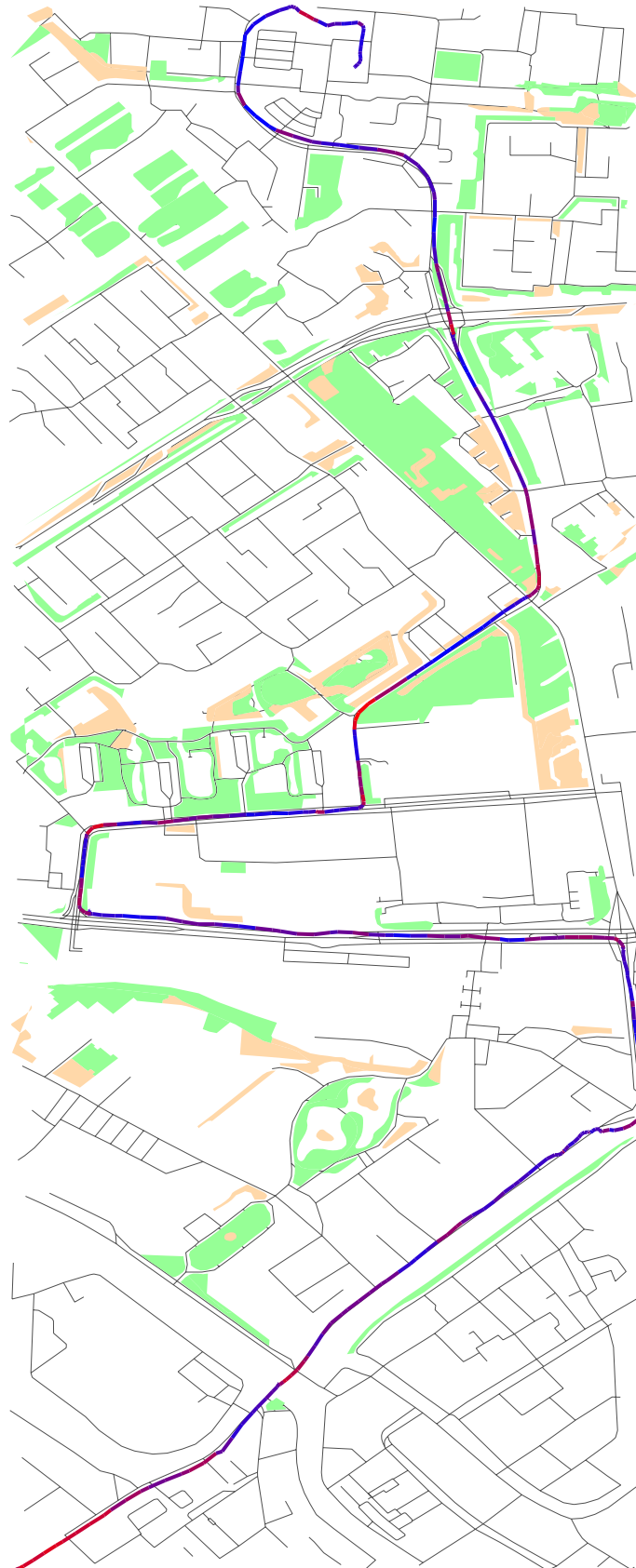


absolute load value histogram



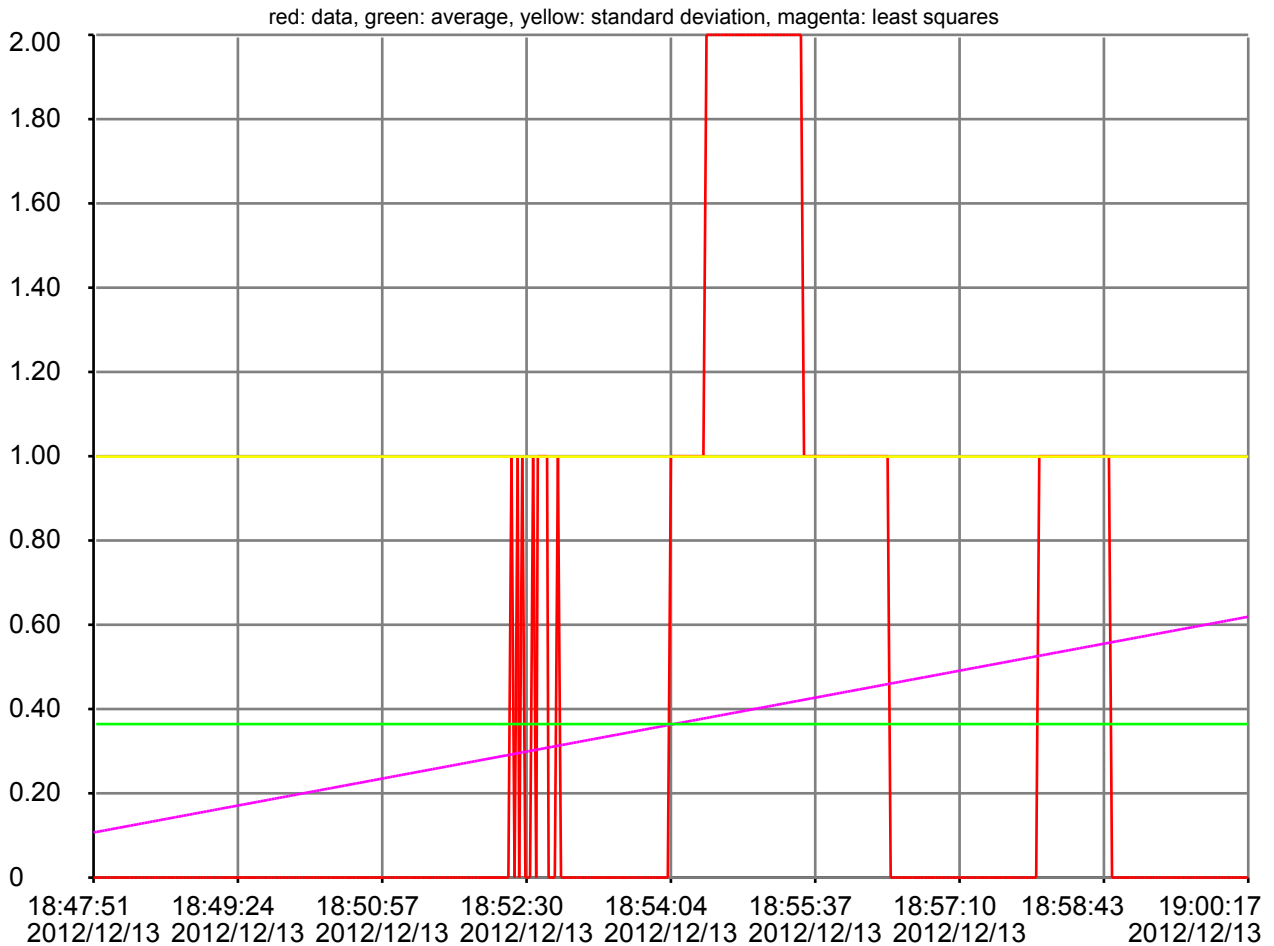


sensor_absolute_load_value





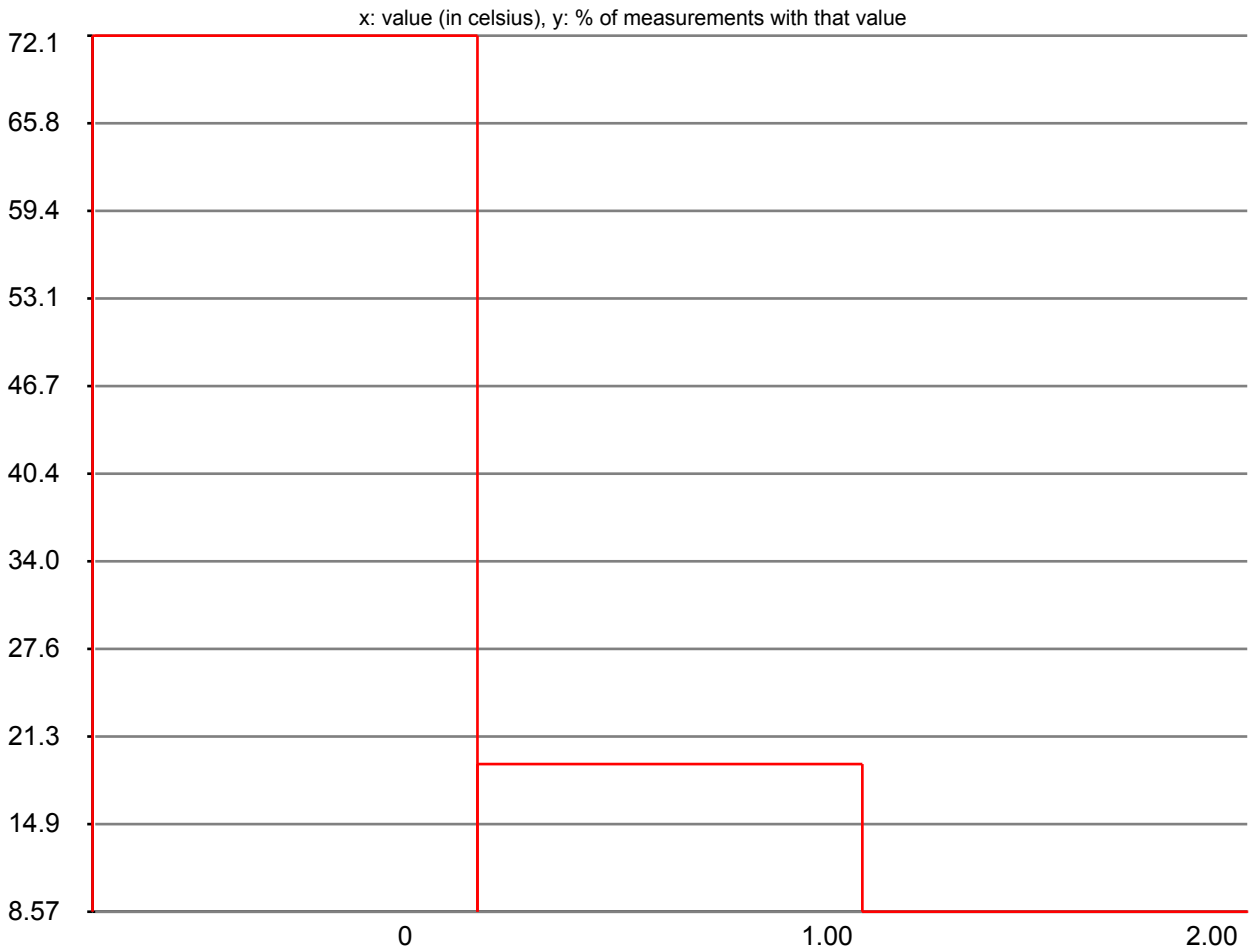
ambient air temperature



data type min : -40.000000
data type max : 215.000000
data units : celsius
description : ambient air temperature
measurement count: 420
data min : 0.000000
data max : 2.000000
first measurement : Thu, 13 Dec 2012 18:47:51 +0100
last measurement : Thu, 13 Dec 2012 19:00:17 +0100
measuring duration : 00:12:26
average : 0.364286
standard deviation : 0.634831

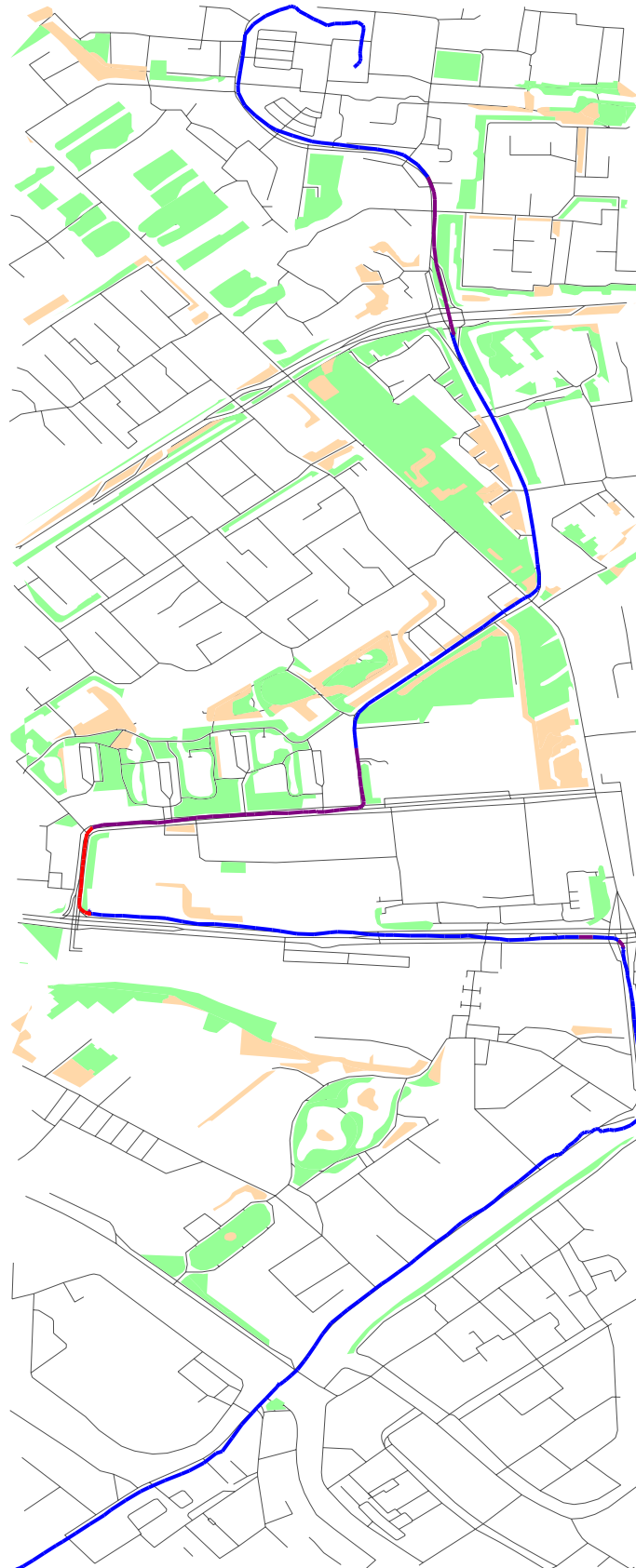


ambient air temperature histogram



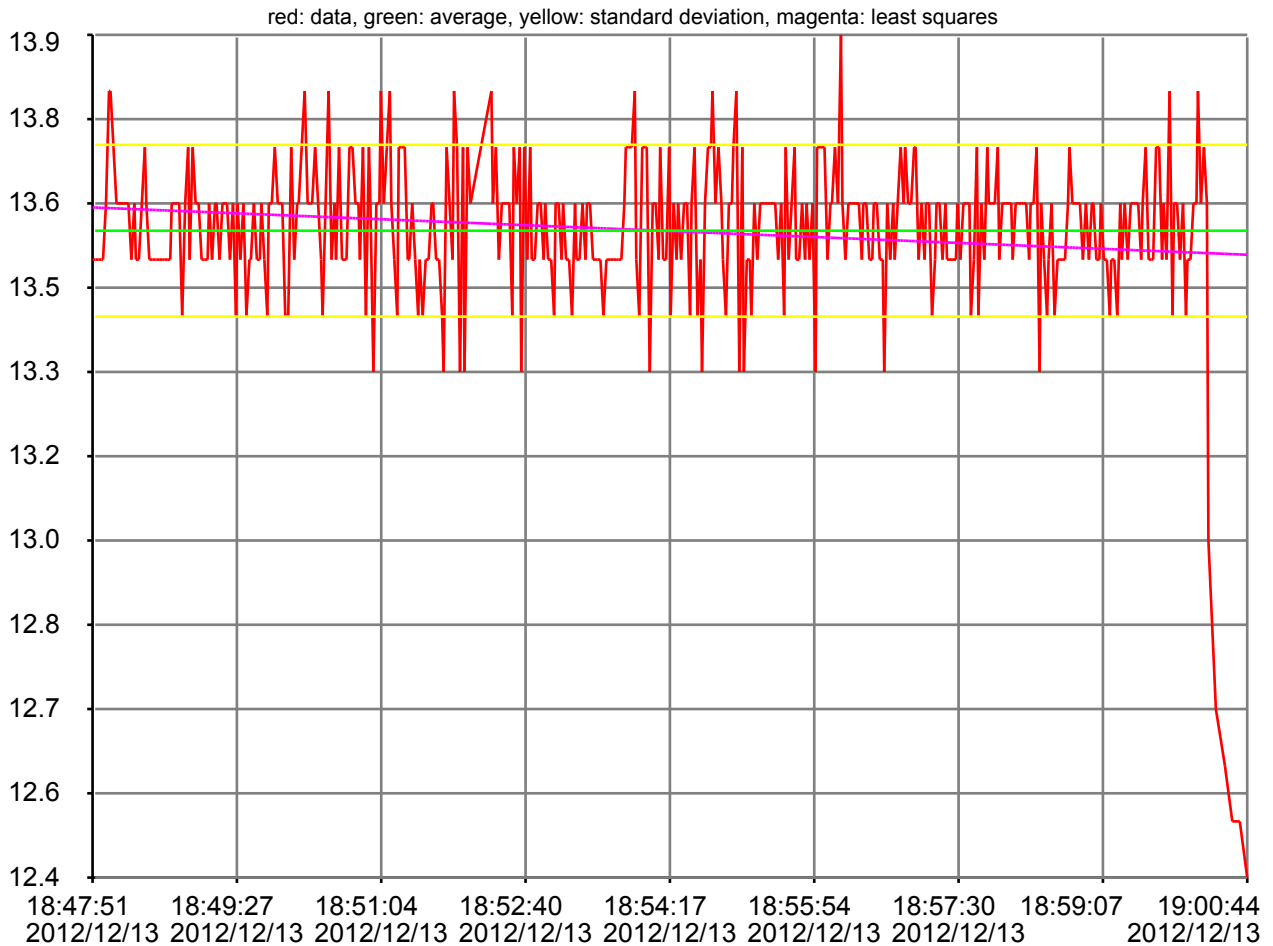


sensor_ambient_air_temperature





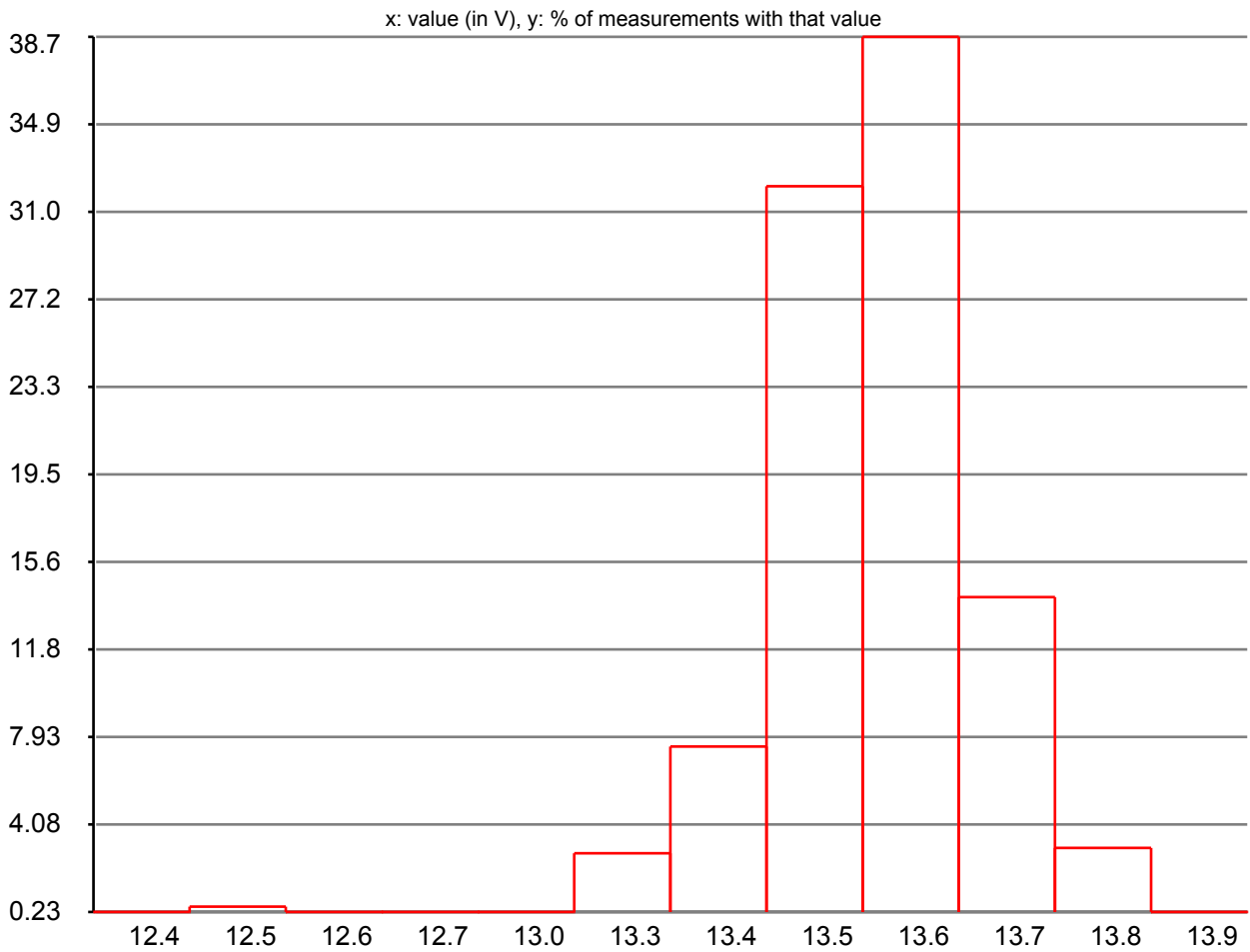
battery voltage



data type min : 0.000000
data type max : 24.000000
data units : V
description : battery voltage
measurement count: 426
data min : 12.400000
data max : 13.900000
first measurement : Thu, 13 Dec 2012 18:47:51 +0100
last measurement : Thu, 13 Dec 2012 19:00:44 +0100
measuring duration : 00:12:53
average : 13.551408
standard deviation : 0.152938

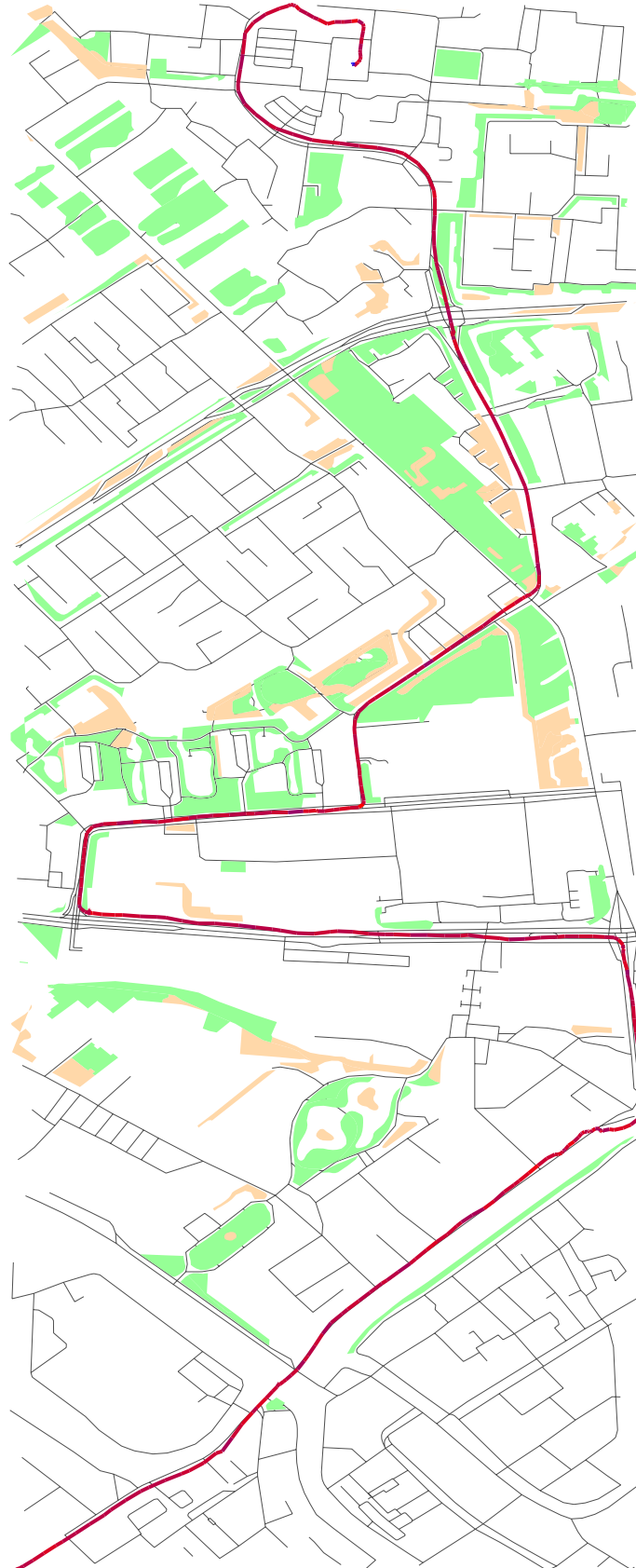


battery voltage histogram



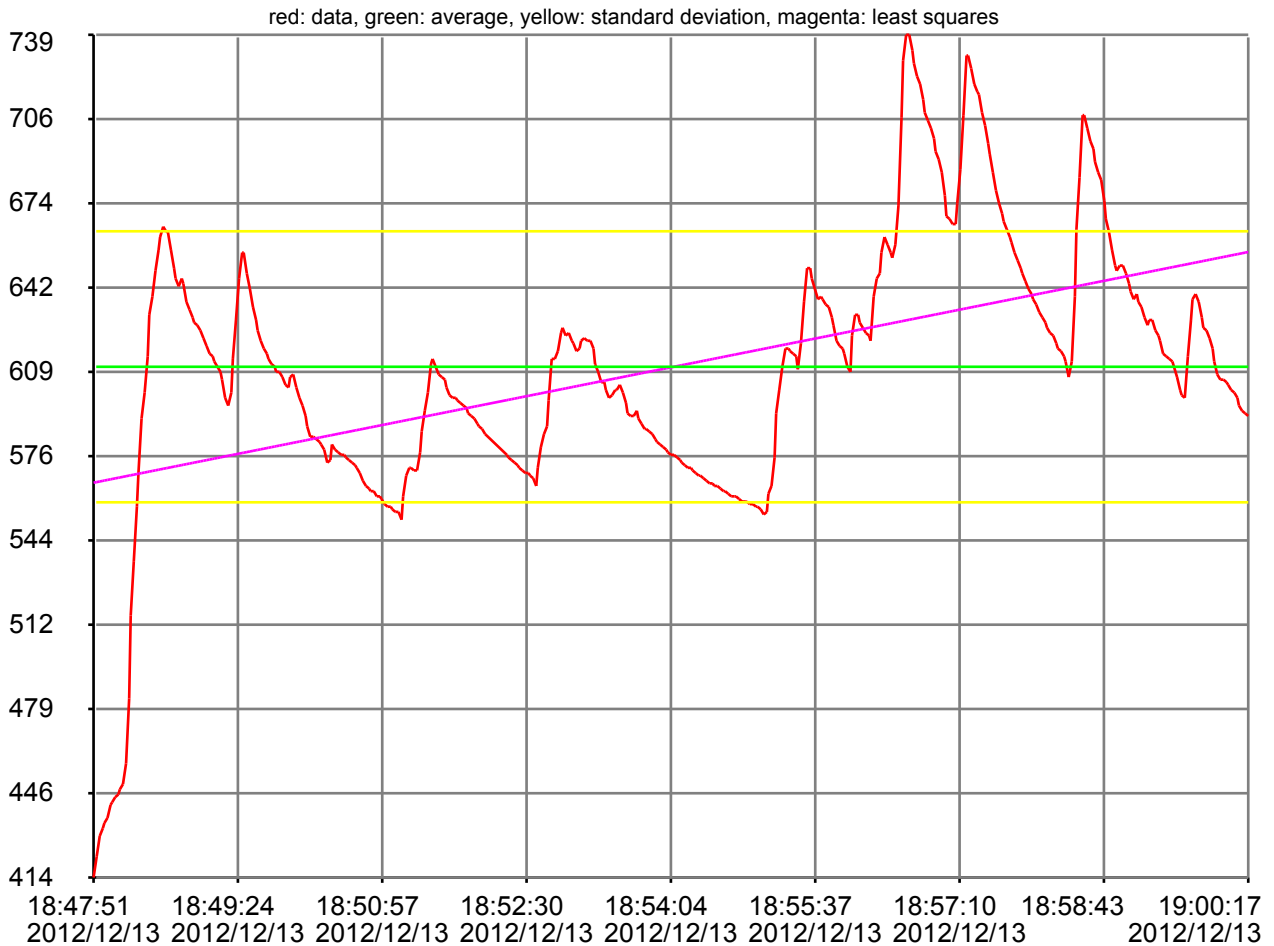


sensor_battery_voltage





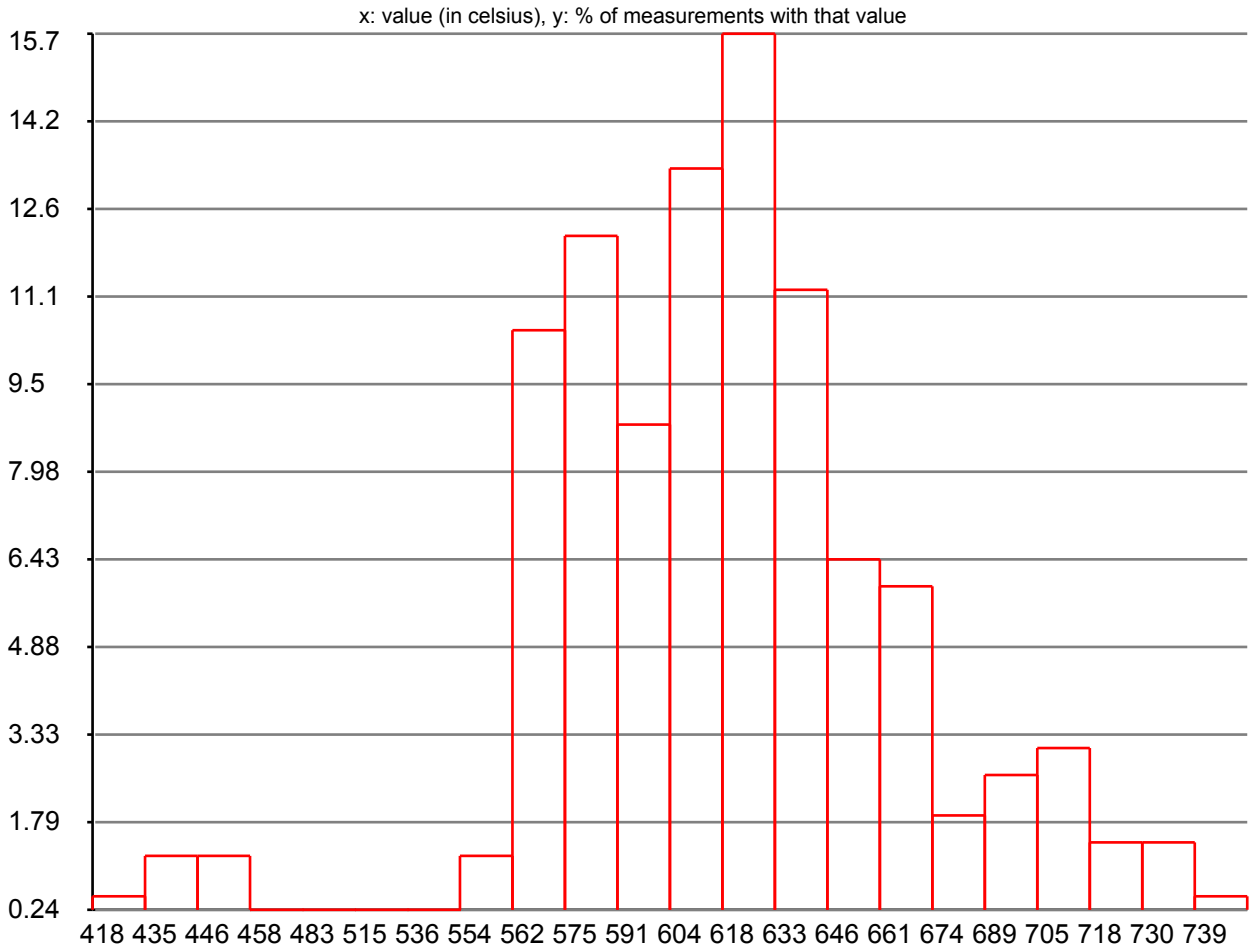
catalyst temperature bank 1 sensor 1



data type min : -40.000000
data type max : 6513.500000
data units : celsius
description : catalyst temperature bank 1 sensor 1
measurement count: 420
data min : 414.000000
data max : 739.000000
first measurement : Thu, 13 Dec 2012 18:47:51 +0100
last measurement : Thu, 13 Dec 2012 19:00:17 +0100
measuring duration : 00:12:26
average : 610.964286
standard deviation : 52.261122

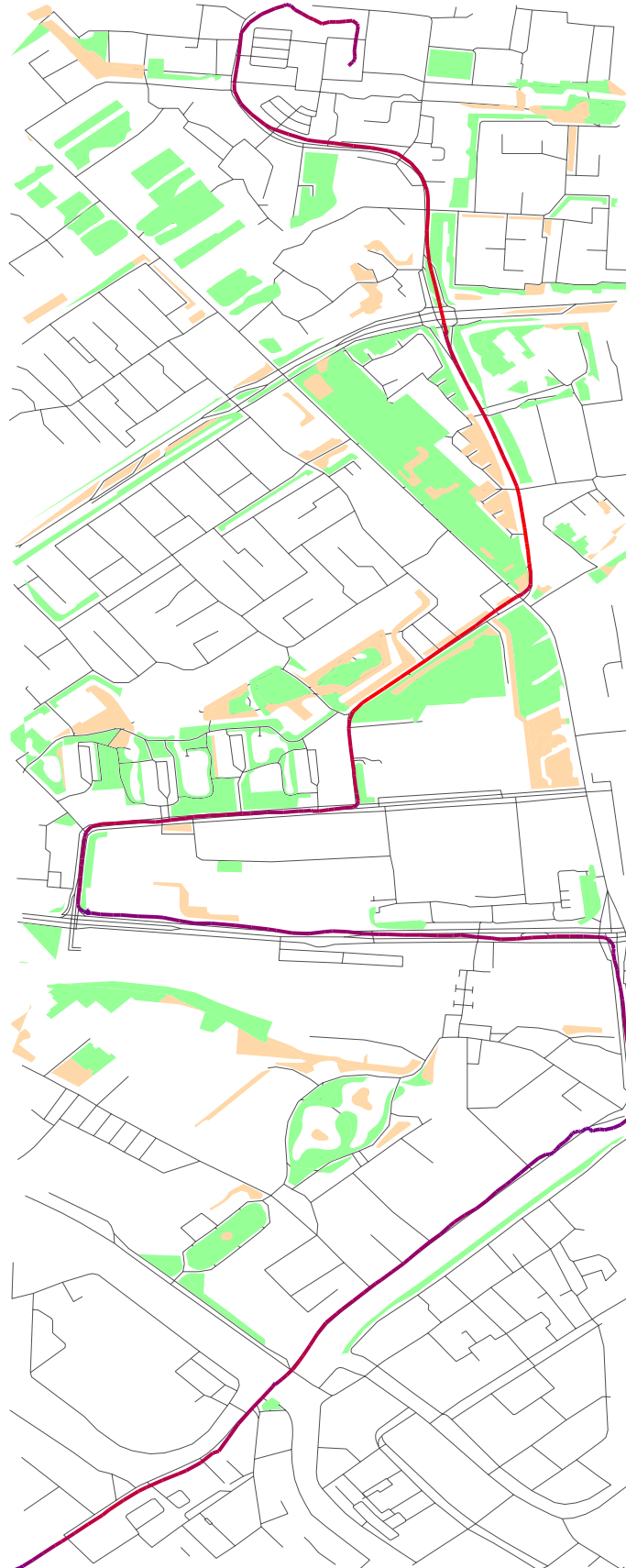


catalyst temperature bank 1 sensor 1 histogram



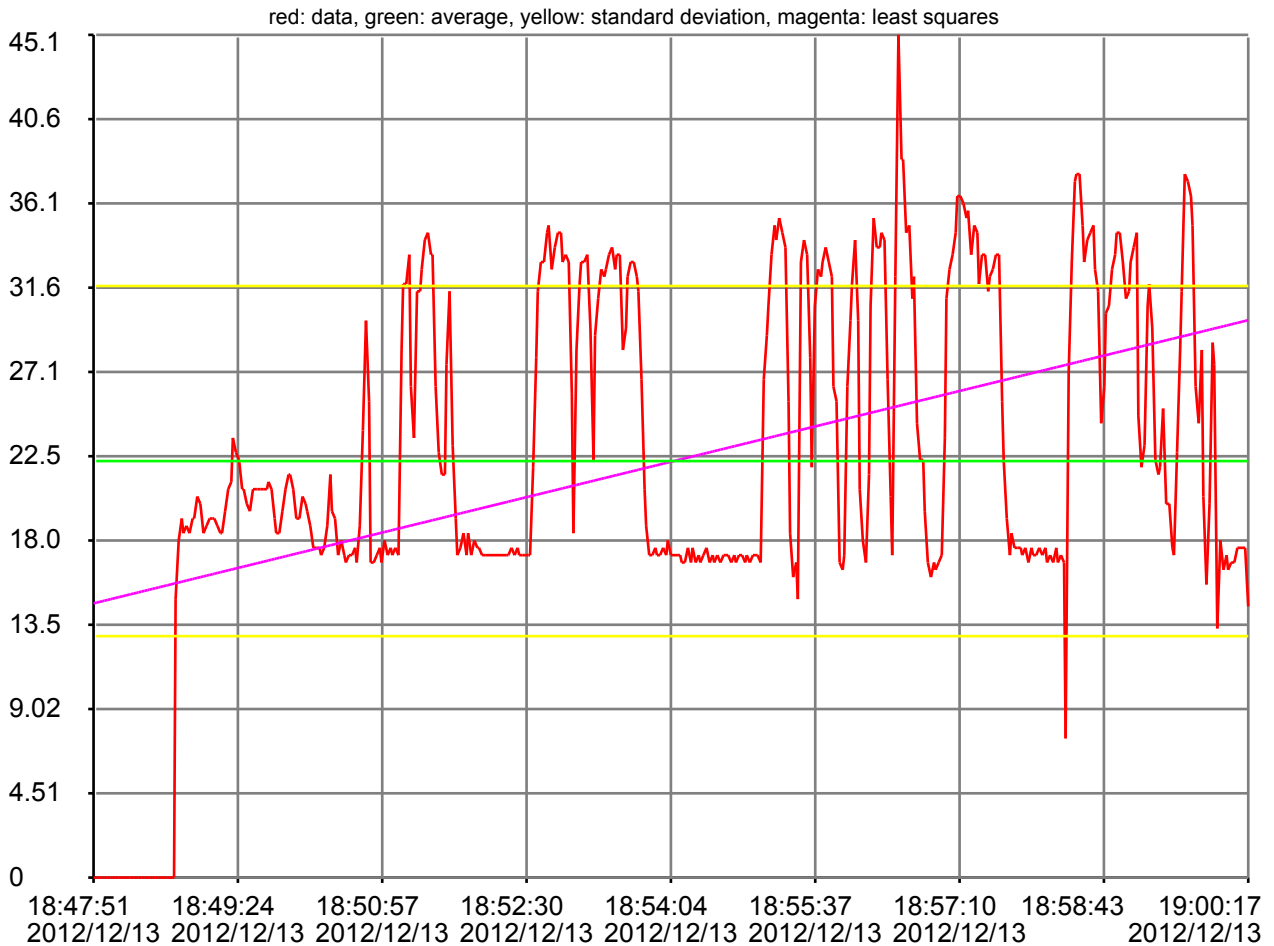


sensor_catalyst_temperature_bank_1_sensor_1





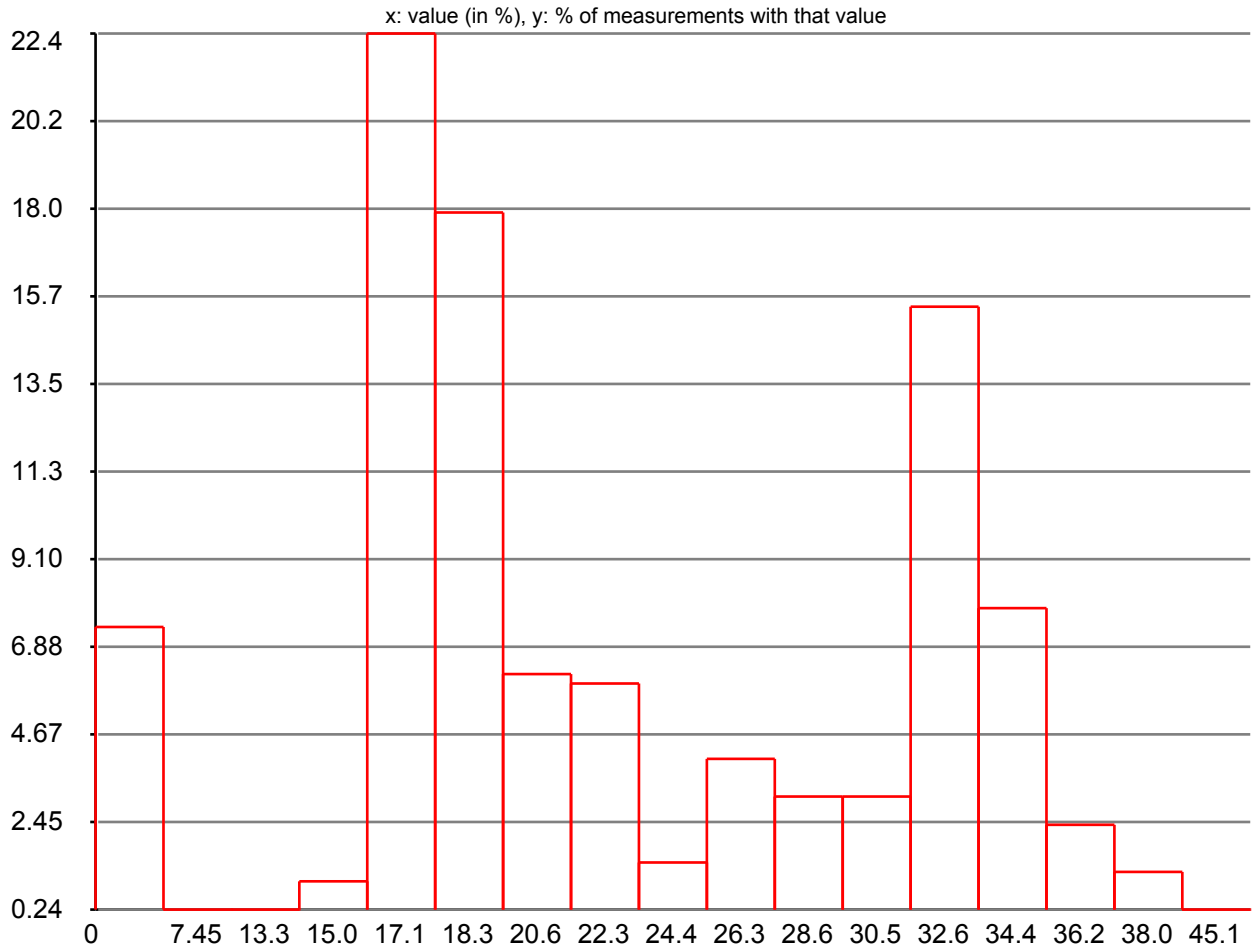
commanded evaporative purge



data type min : 0.000000
data type max : 100.000000
data units : %
description : commanded evaporative purge
measurement count: 420
data min : 0.000000
data max : 45.098040
first measurement : Thu, 13 Dec 2012 18:47:51 +0100
last measurement : Thu, 13 Dec 2012 19:00:17 +0100
measuring duration : 00:12:26
average : 22.289449
standard deviation : 9.370181

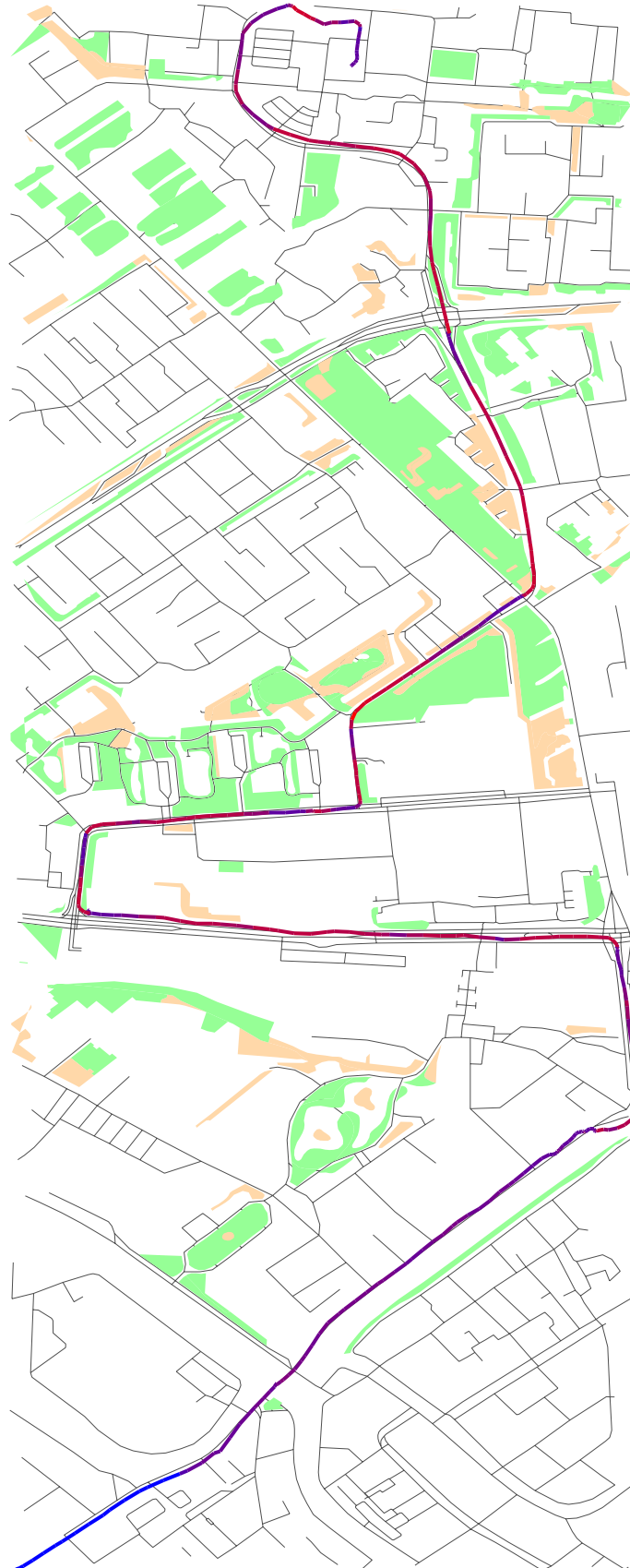


commanded evaporative purge histogram



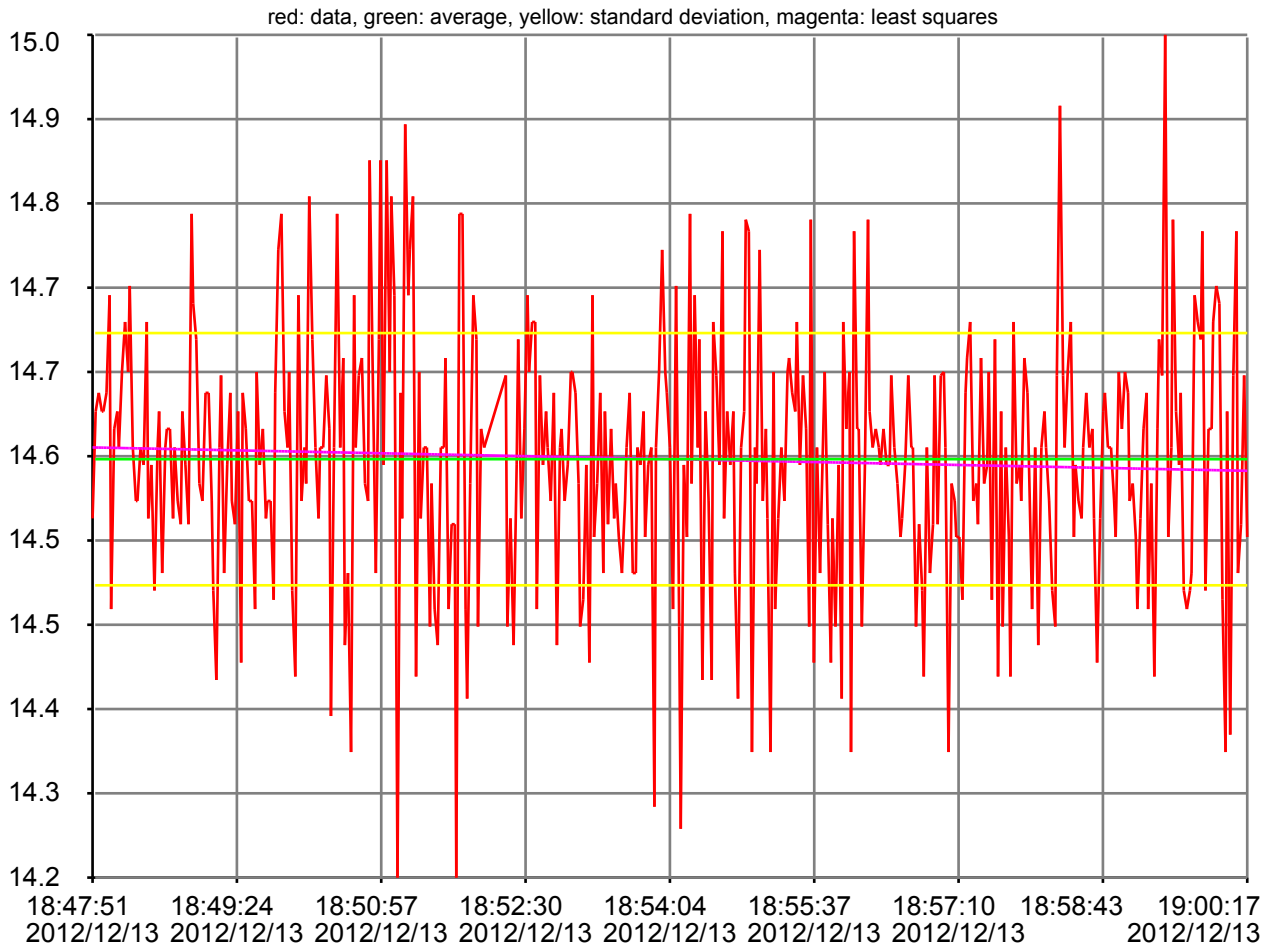


sensor_commanded_evaporative_purge





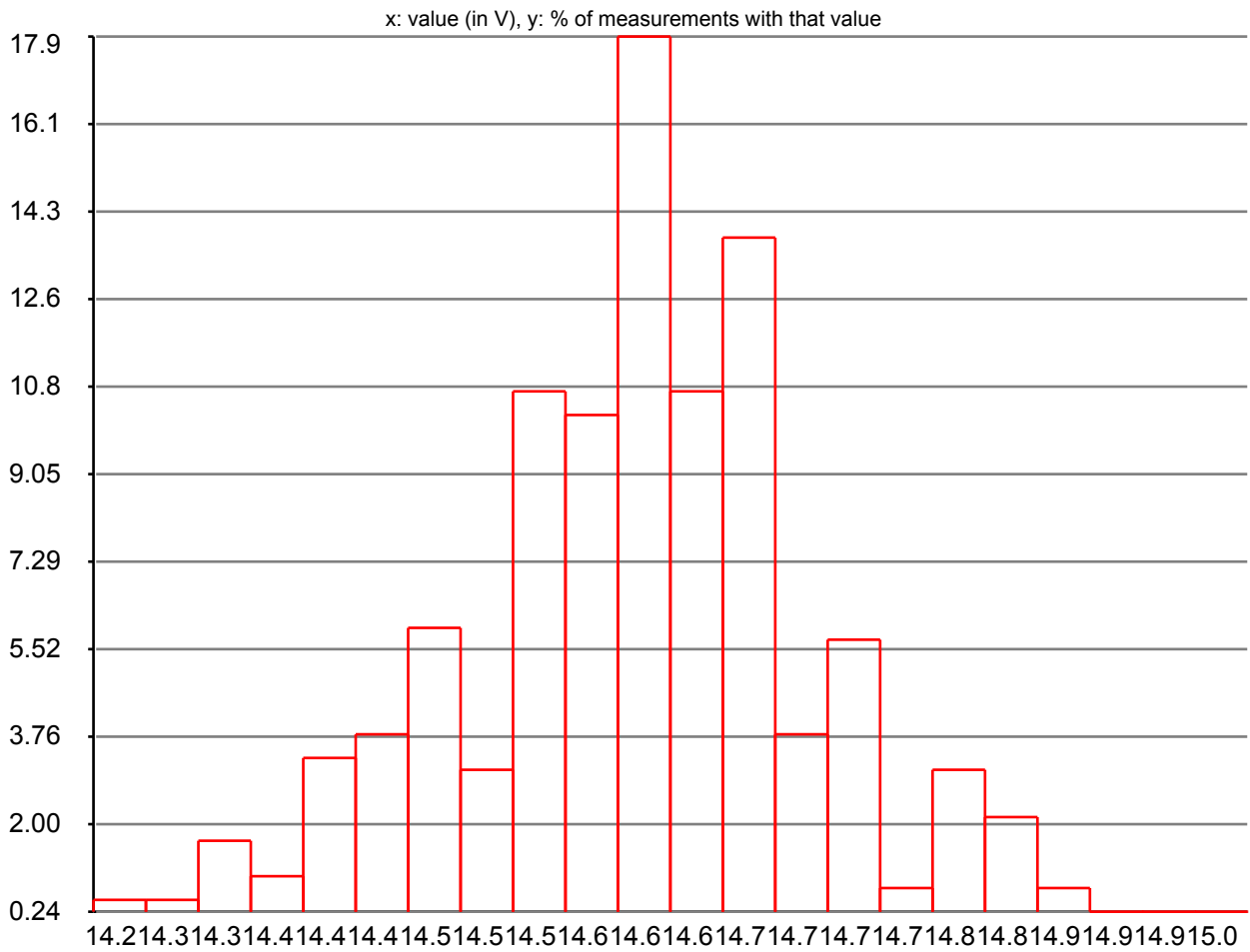
control module voltage



data type min : -40.000000
data type max : 65.535000
data units : V
description : control module voltage
measurement count: 420
data min : 14.237000
data max : 14.962000
first measurement : Thu, 13 Dec 2012 18:47:51 +0100
last measurement : Thu, 13 Dec 2012 19:00:17 +0100
measuring duration : 00:12:26
average : 14.596948
standard deviation : 0.108498

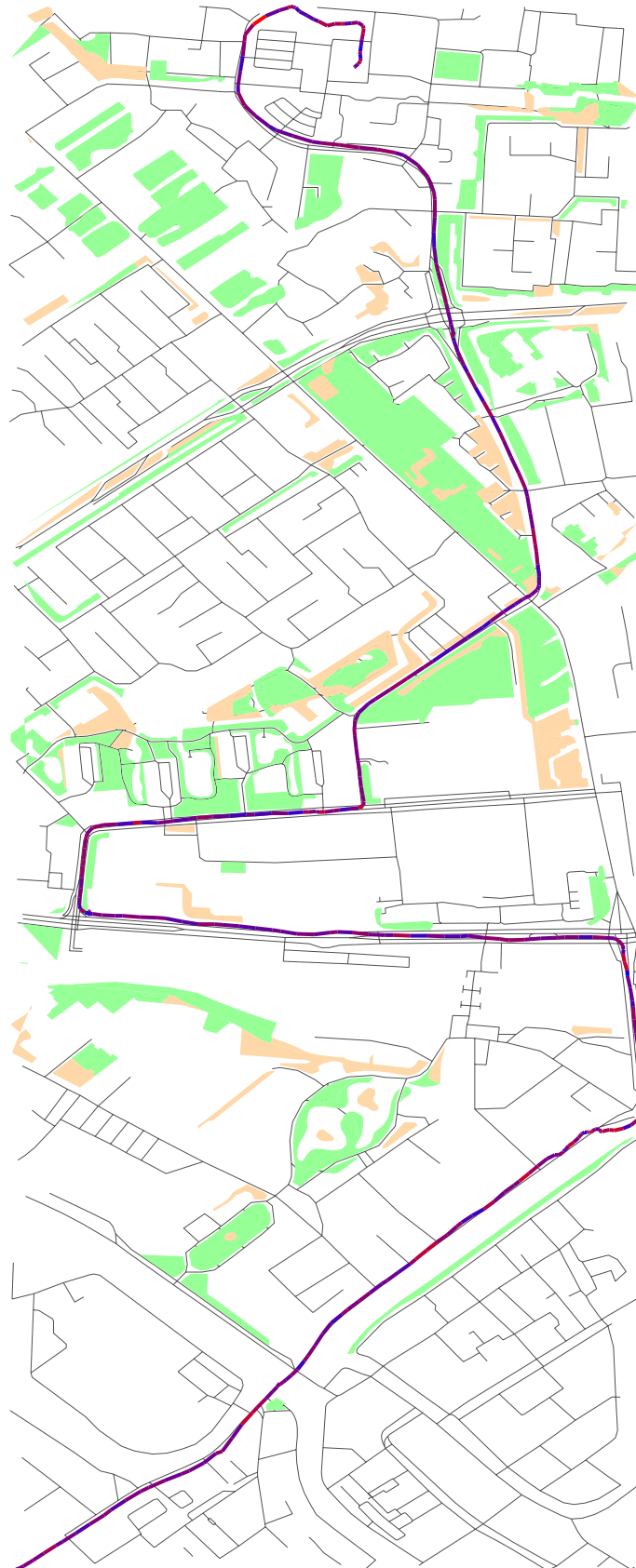


control module voltage histogram



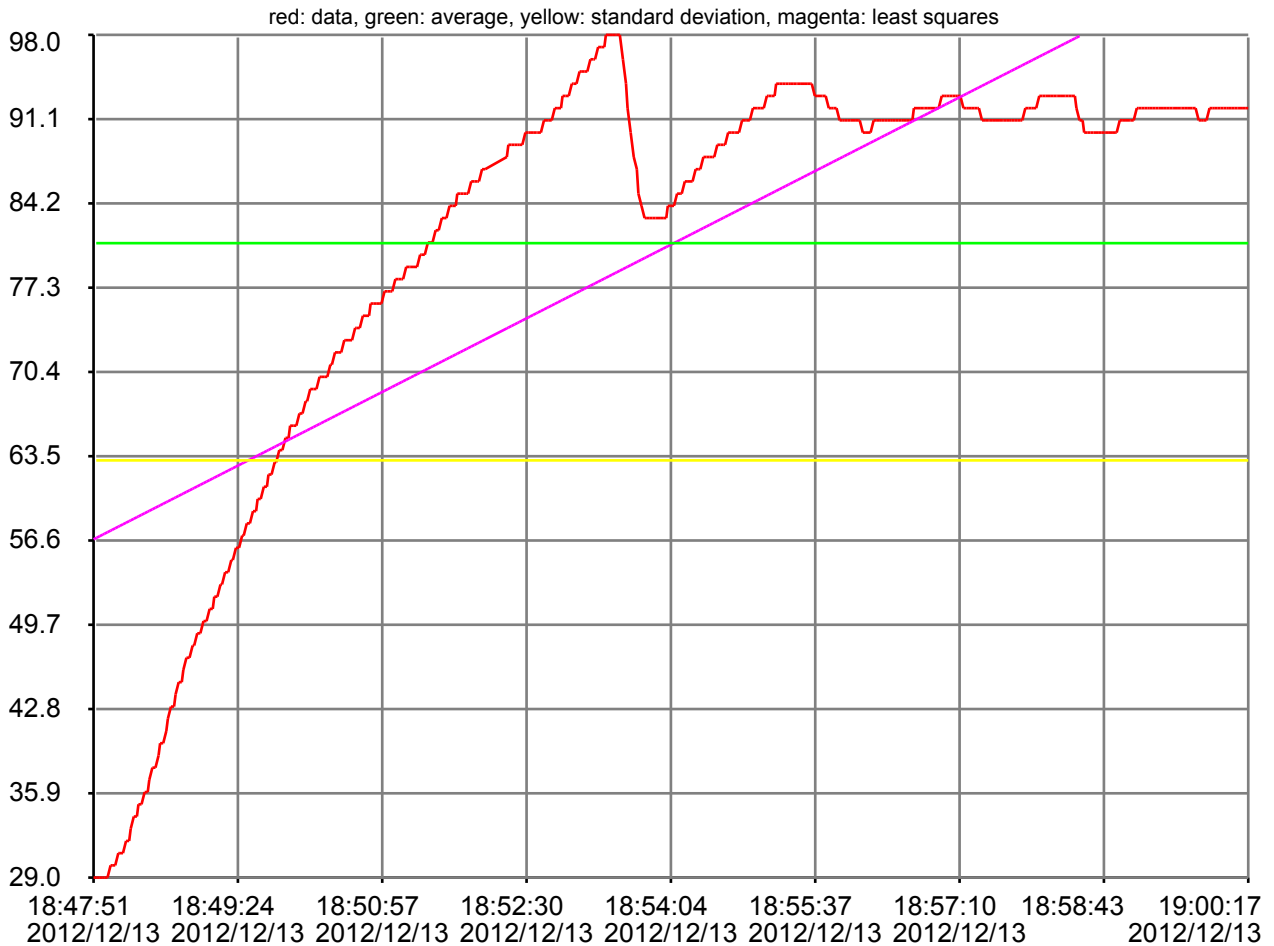


sensor_control_module_voltage





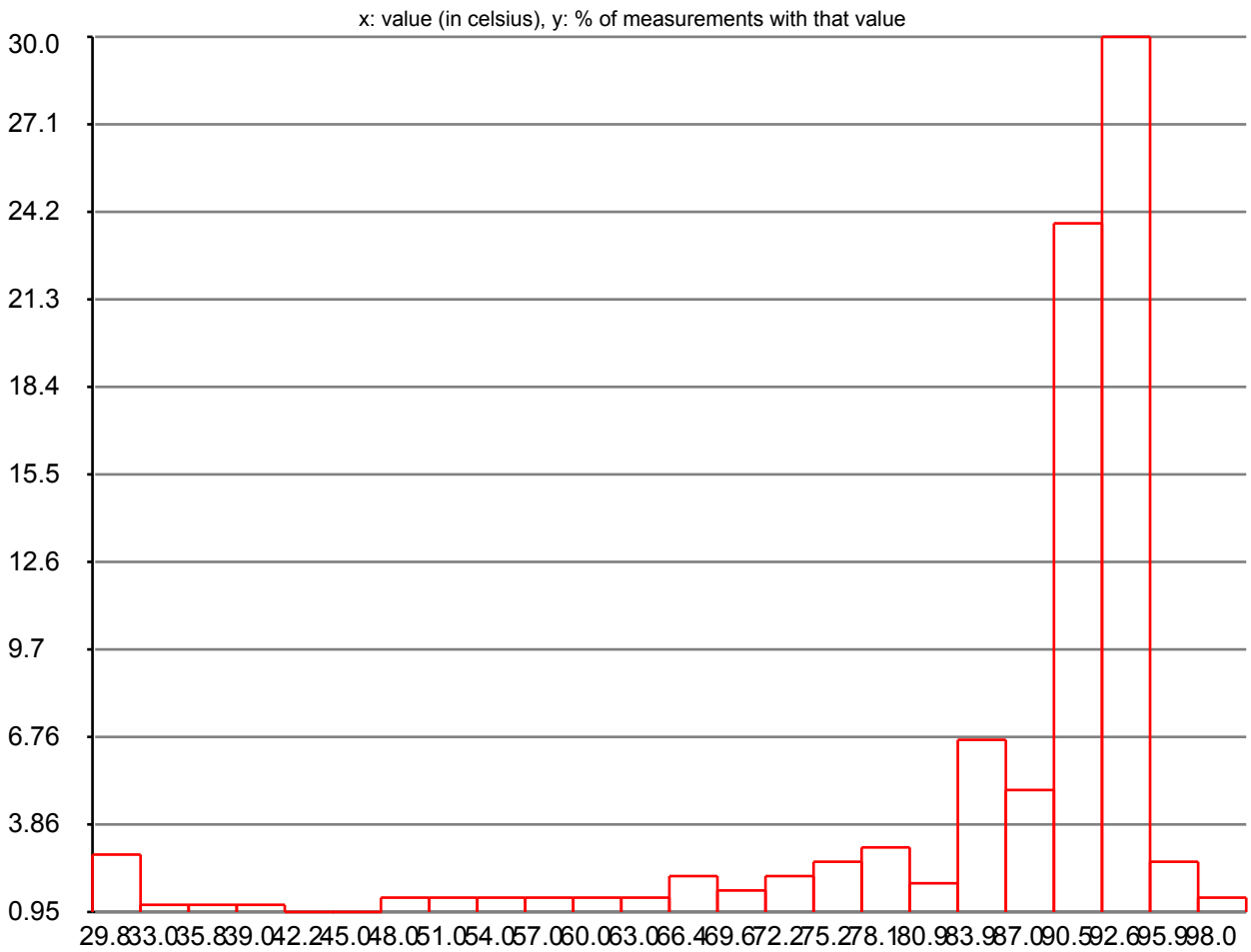
coolant temperature



data type min : -40.000000
data type max : 215.000000
data units : celsius
description : coolant temperature
measurement count: 420
data min : 29.000000
data max : 98.000000
first measurement : Thu, 13 Dec 2012 18:47:51 +0100
last measurement : Thu, 13 Dec 2012 19:00:17 +0100
measuring duration : 00:12:26
average : 80.945238
standard deviation : 17.786012

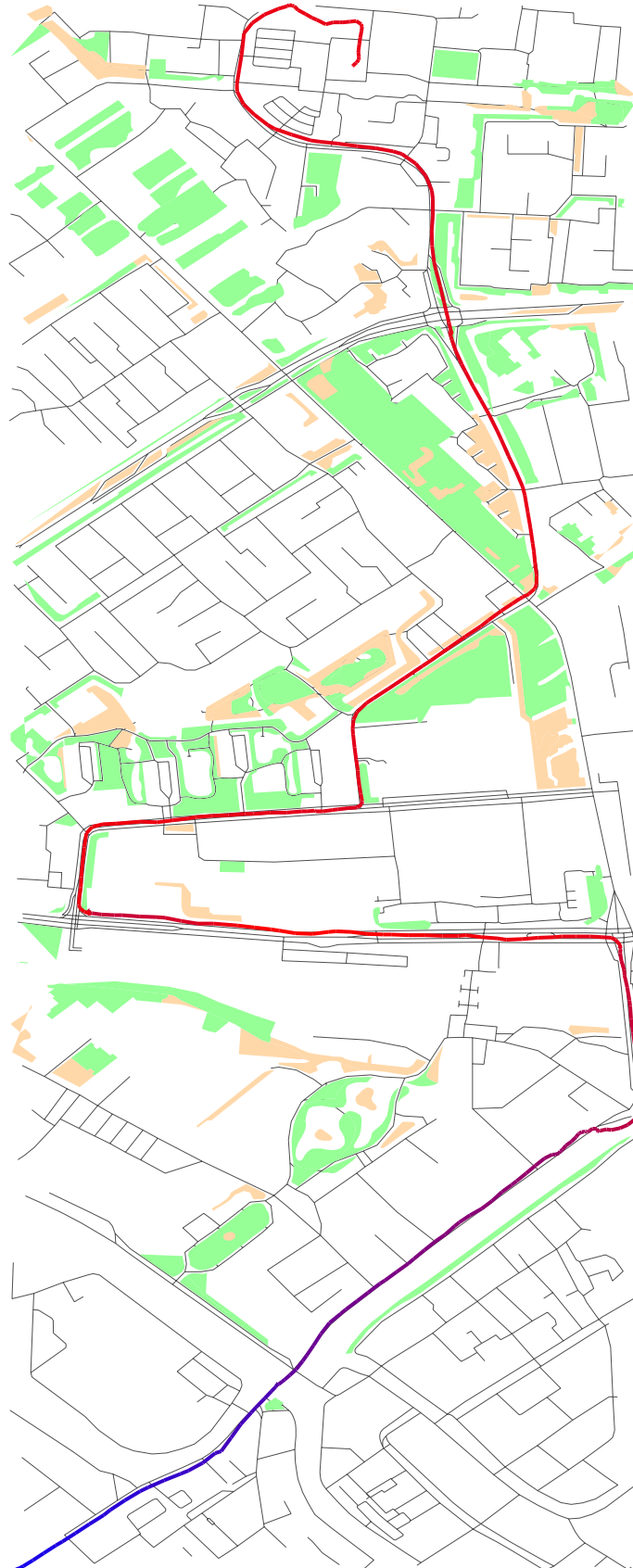


coolant temperature histogram



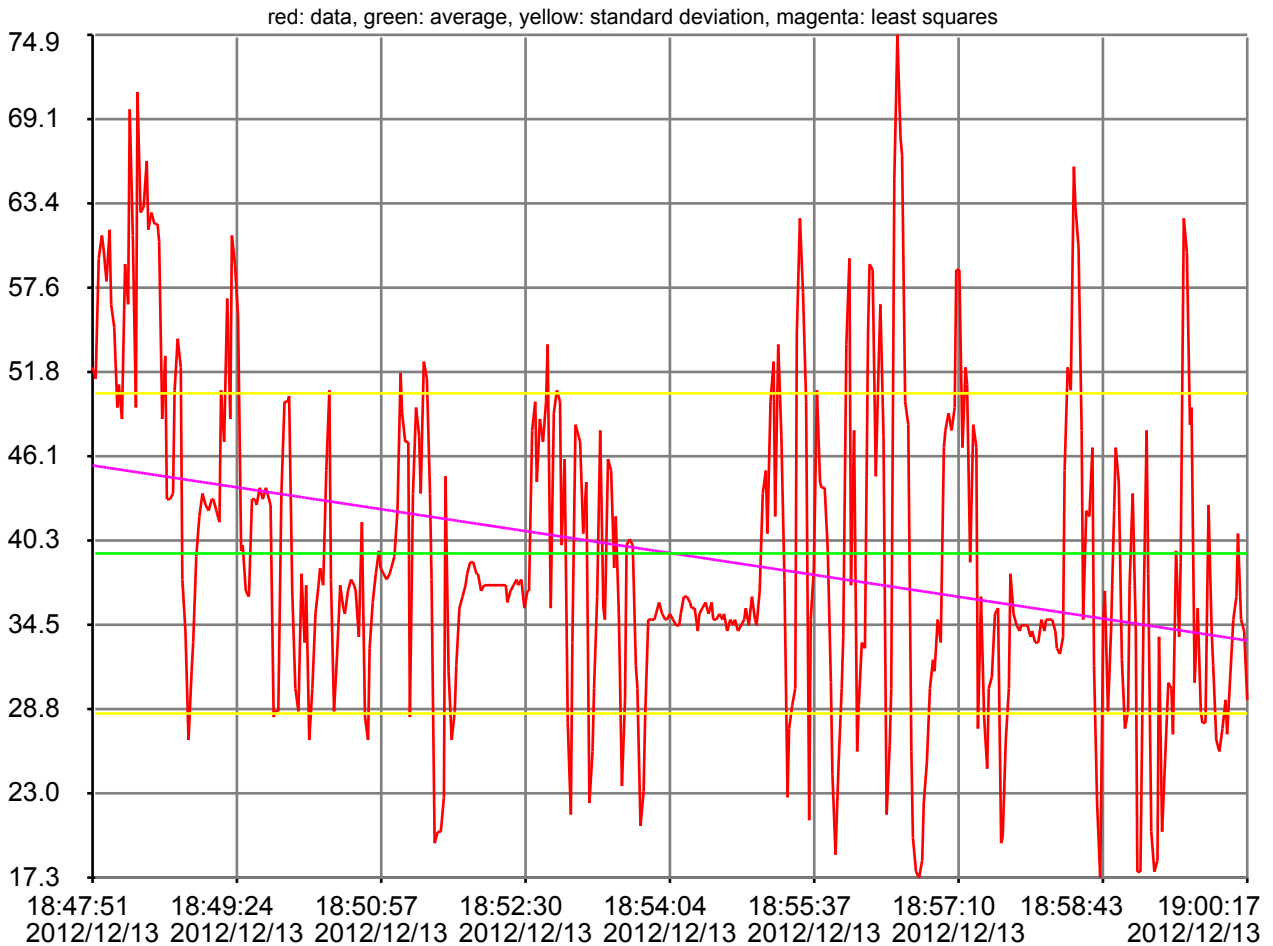


sensor_engine_coolant_temperature





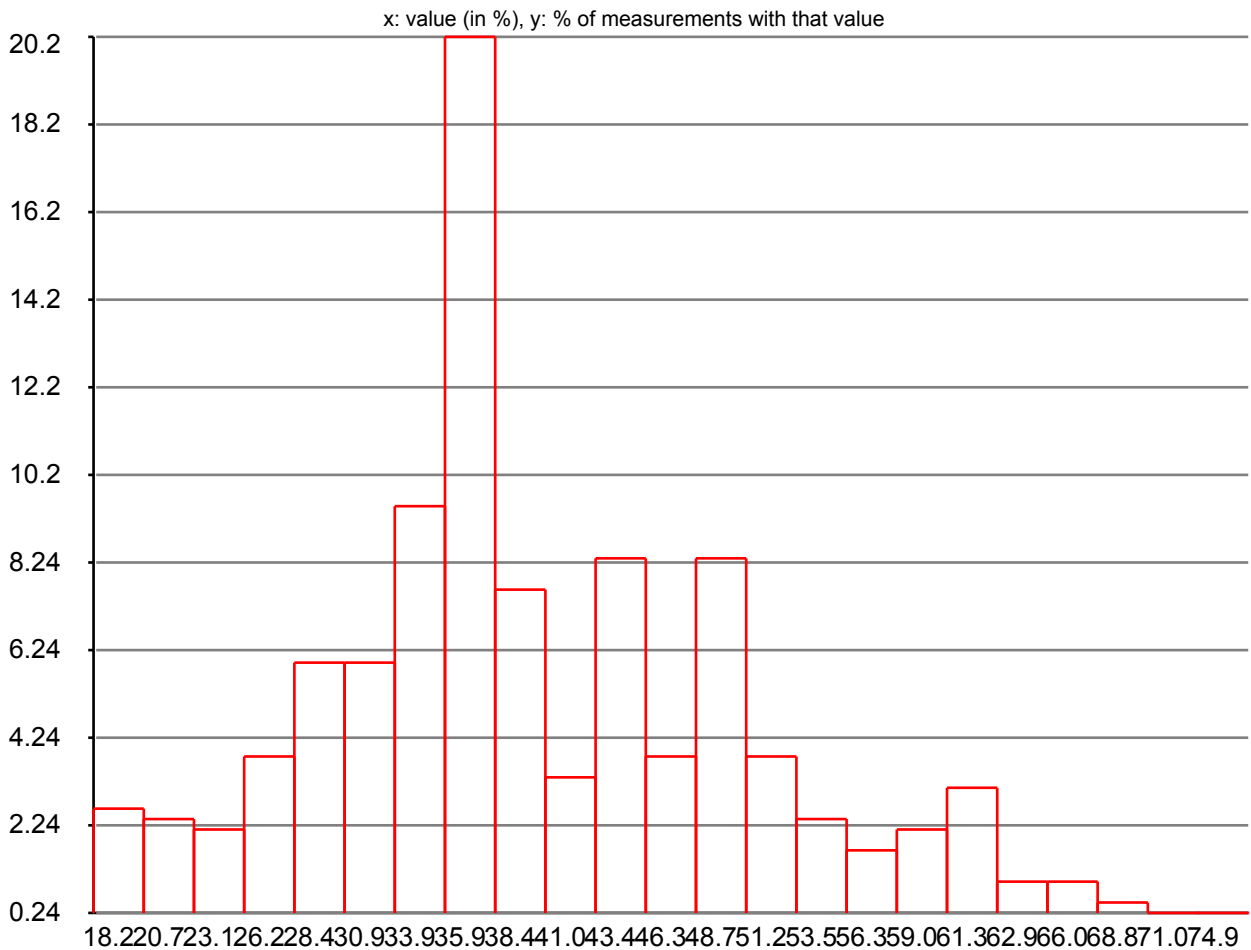
engine load



data type min : 0.000000
data type max : 100.000000
data units : %
description : engine load
measurement count: 420
data min : 17.254900
data max : 74.901960
first measurement : Thu, 13 Dec 2012 18:47:51 +0100
last measurement : Thu, 13 Dec 2012 19:00:17 +0100
measuring duration : 00:12:26
average : 39.427638
standard deviation : 10.950411

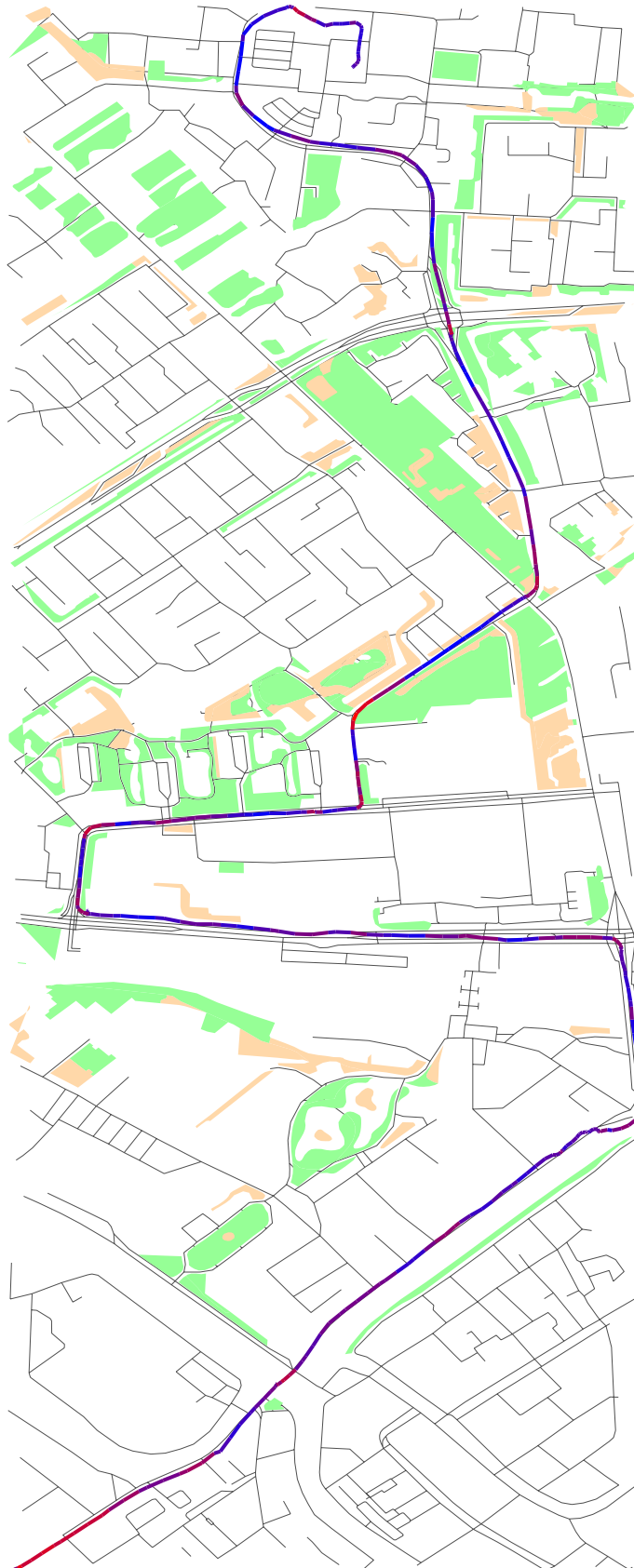


engine load histogram



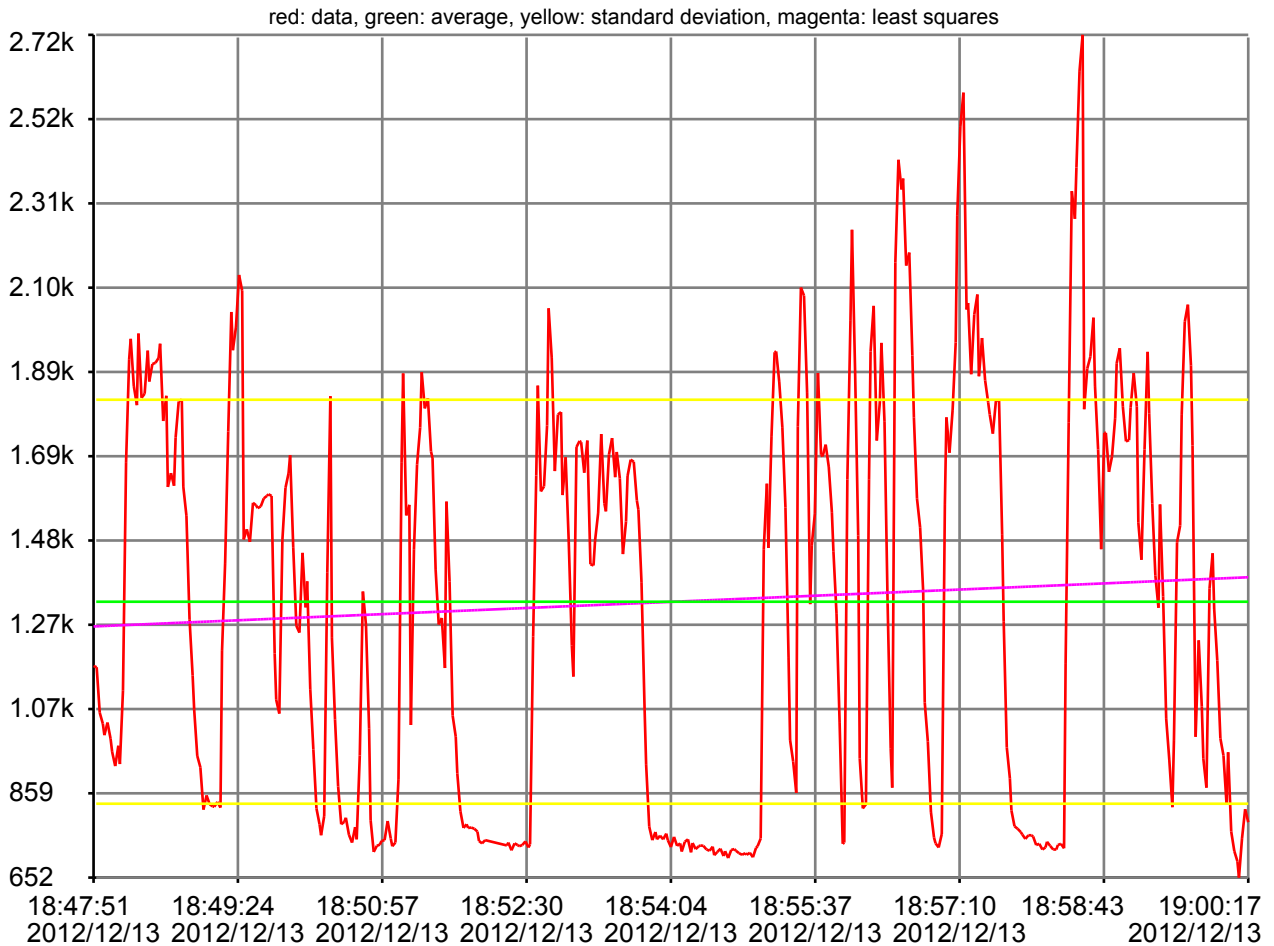


sensor_engine_load





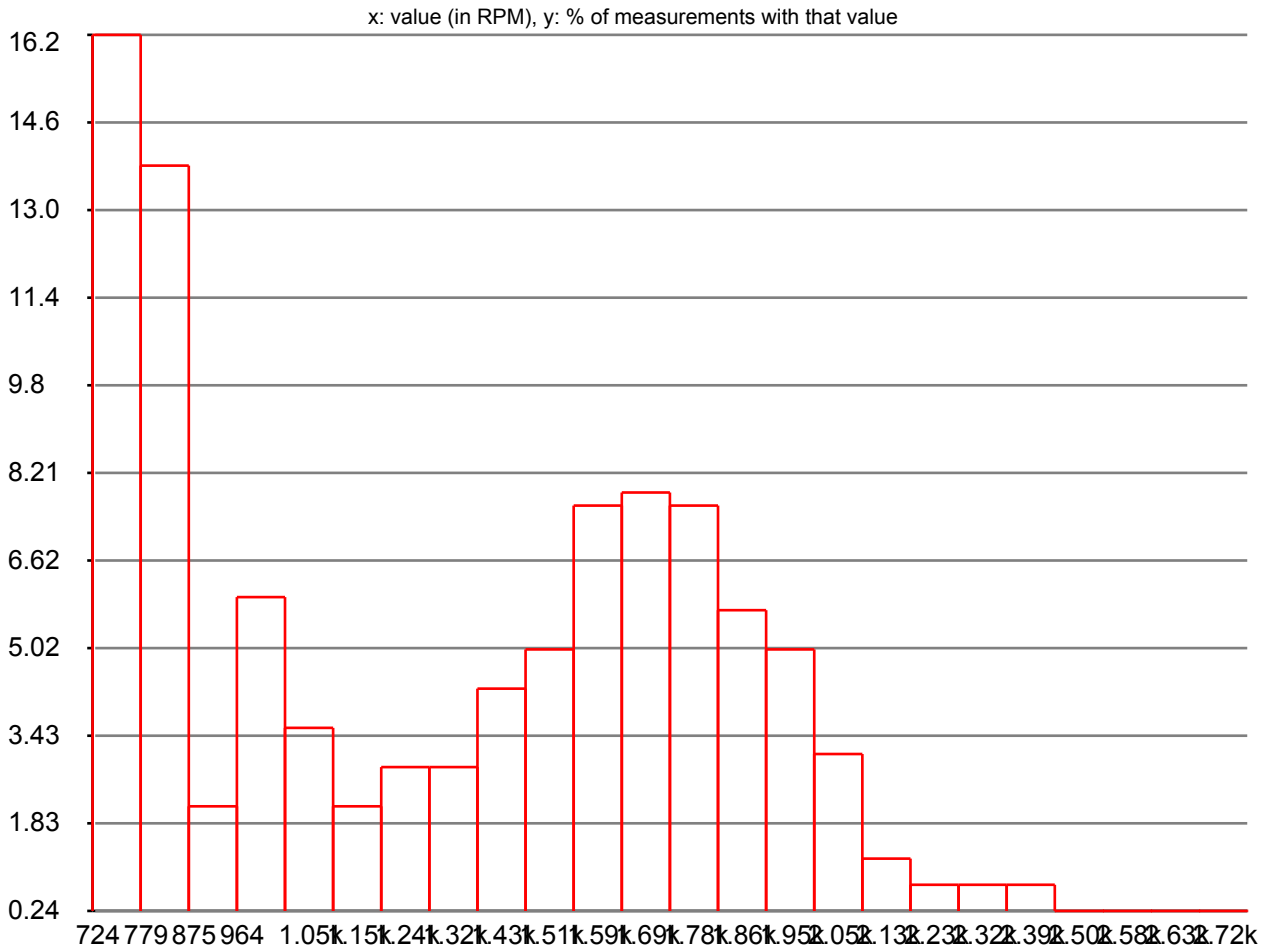
RPM



data type min : 0.000000
data type max : 16383.750000
data units : RPM
description : RPM
measurement count: 420
data min : 652.000000
data max : 2723.000000
first measurement : Thu, 13 Dec 2012 18:47:51 +0100
last measurement : Thu, 13 Dec 2012 19:00:17 +0100
measuring duration : 00:12:26
average : 1329.900000
standard deviation : 496.411695

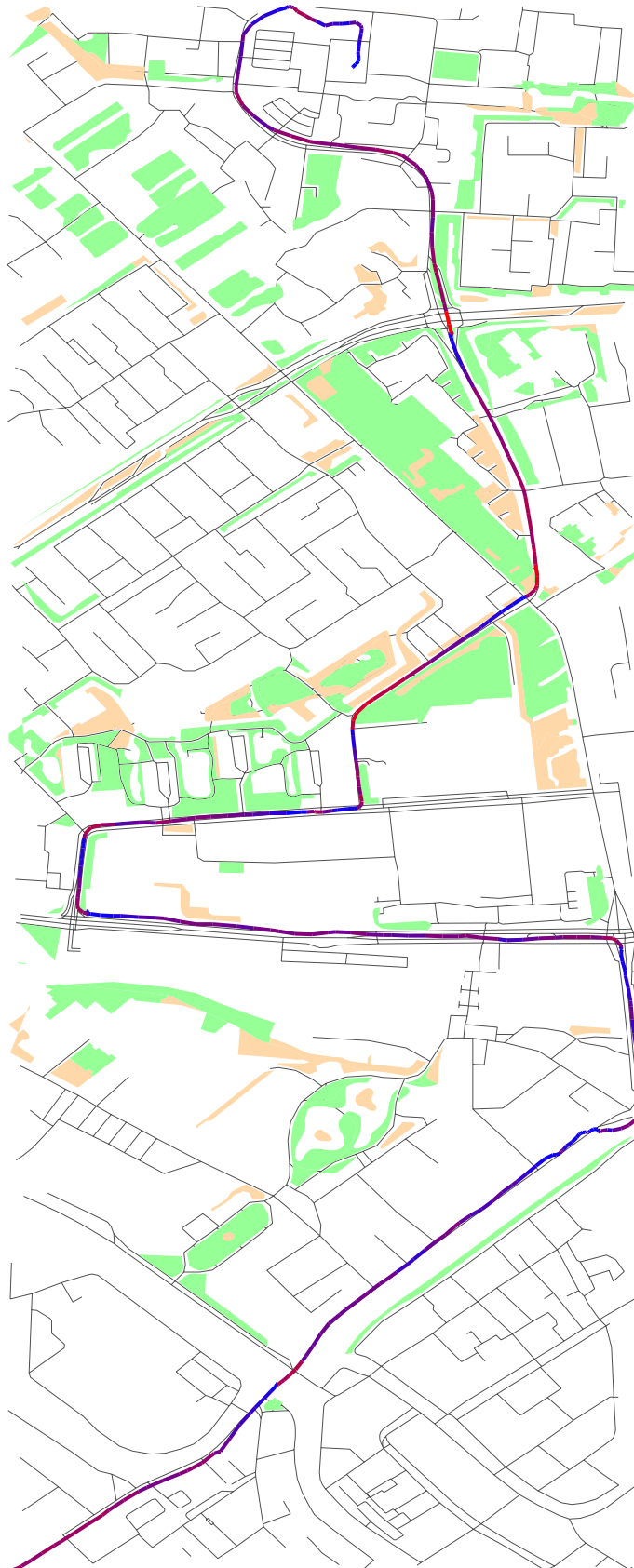


RPM histogram



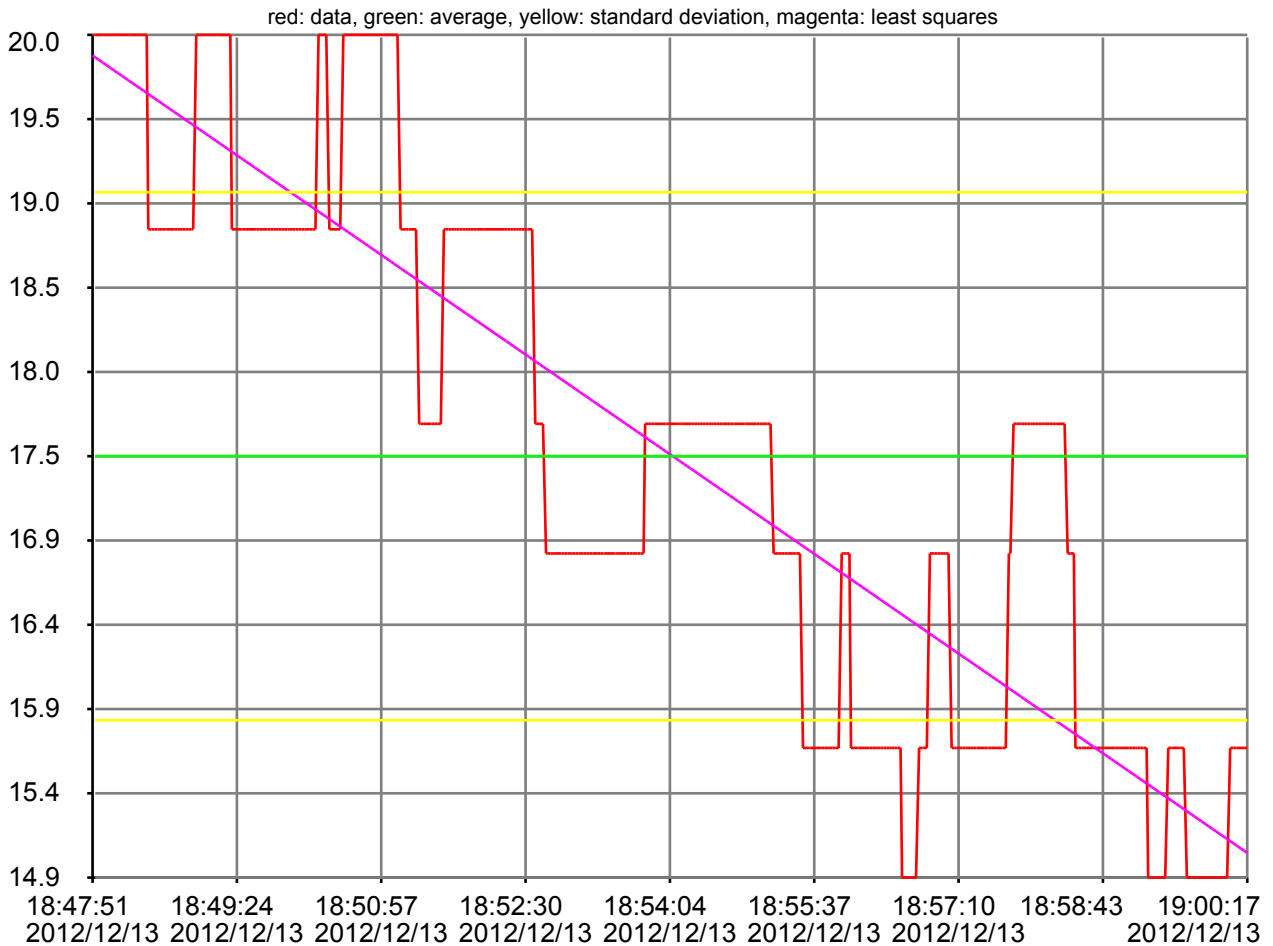


sensor_engine_rpm





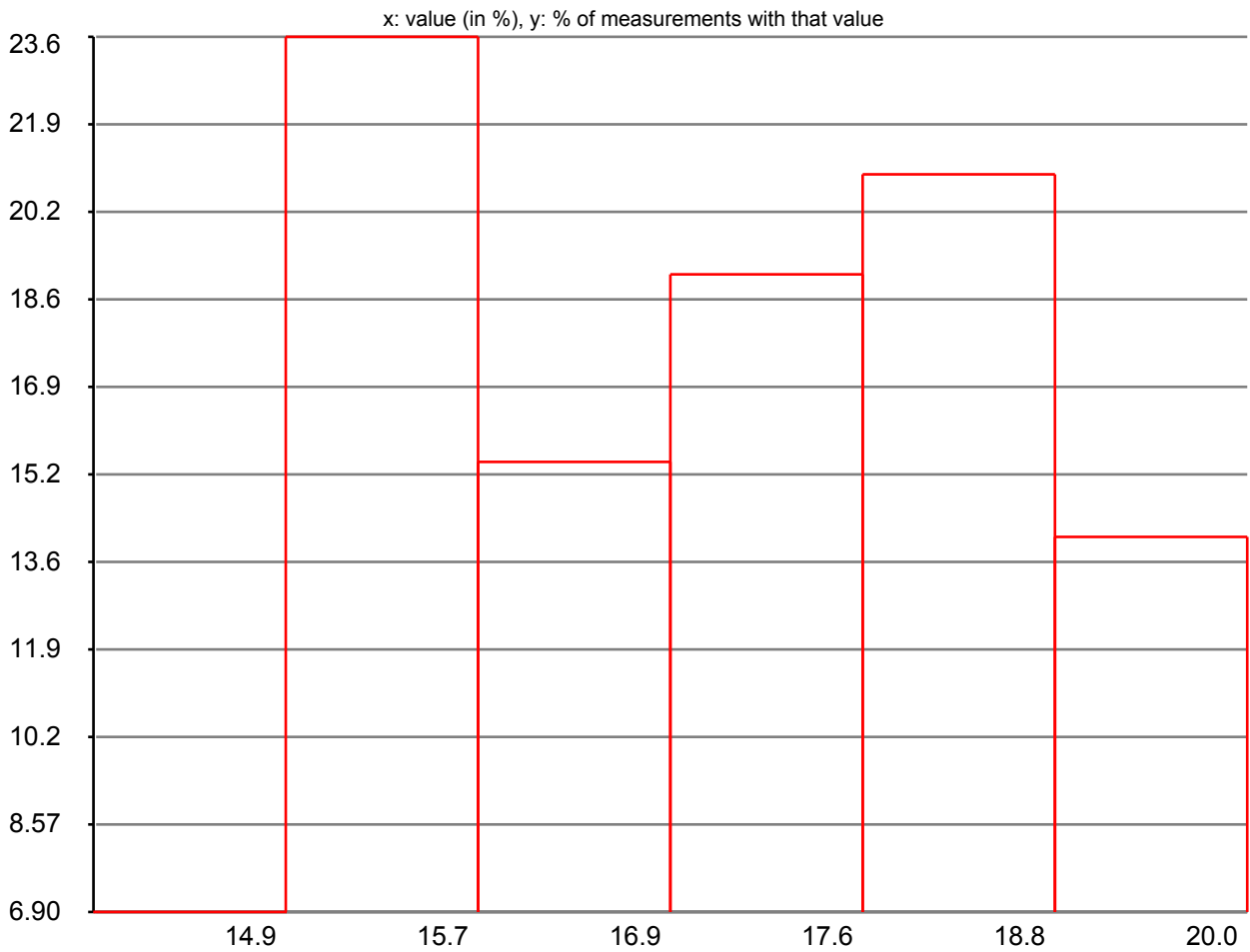
fuel level input



data type min : 0.000000
data type max : 100.000000
data units : %
description : fuel level input
measurement count: 420
data min : 14.901960
data max : 20.000000
first measurement : Thu, 13 Dec 2012 18:47:51 +0100
last measurement : Thu, 13 Dec 2012 19:00:17 +0100
measuring duration : 00:12:26
average : 17.450980
standard deviation : 1.597197

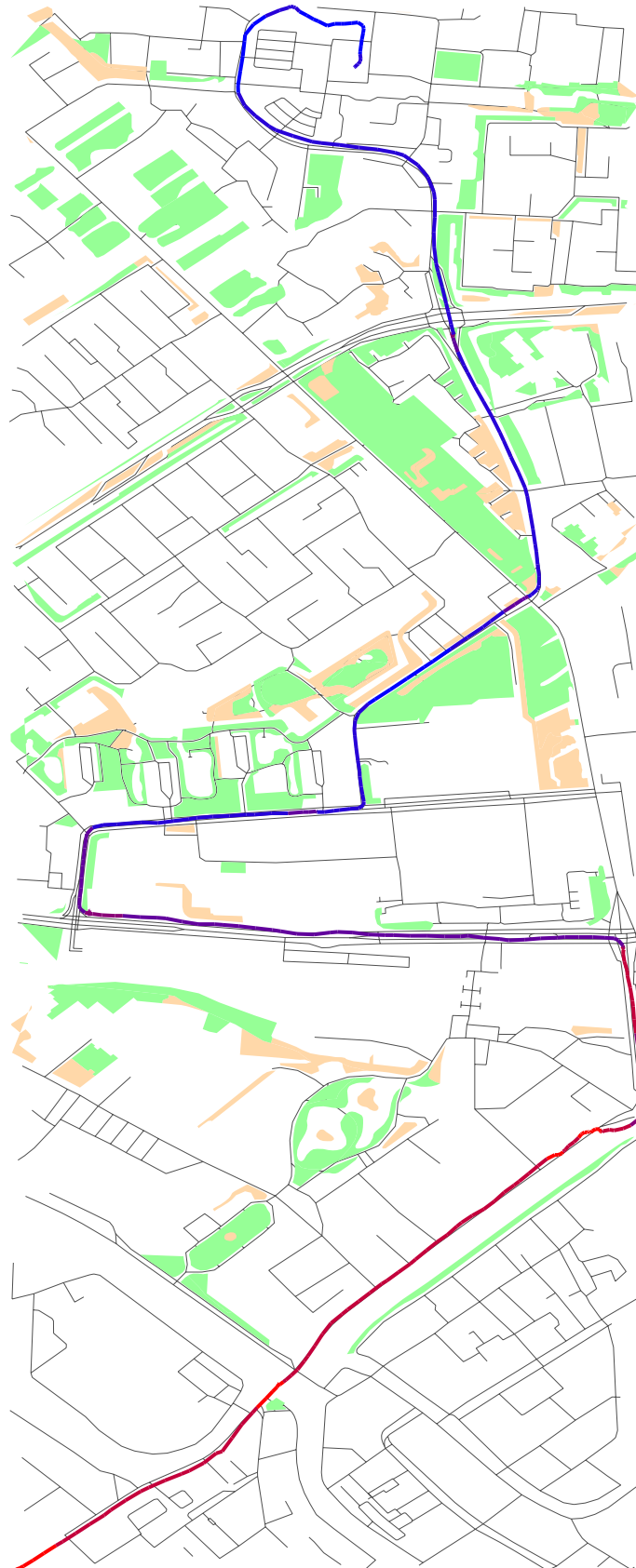


fuel level input histogram



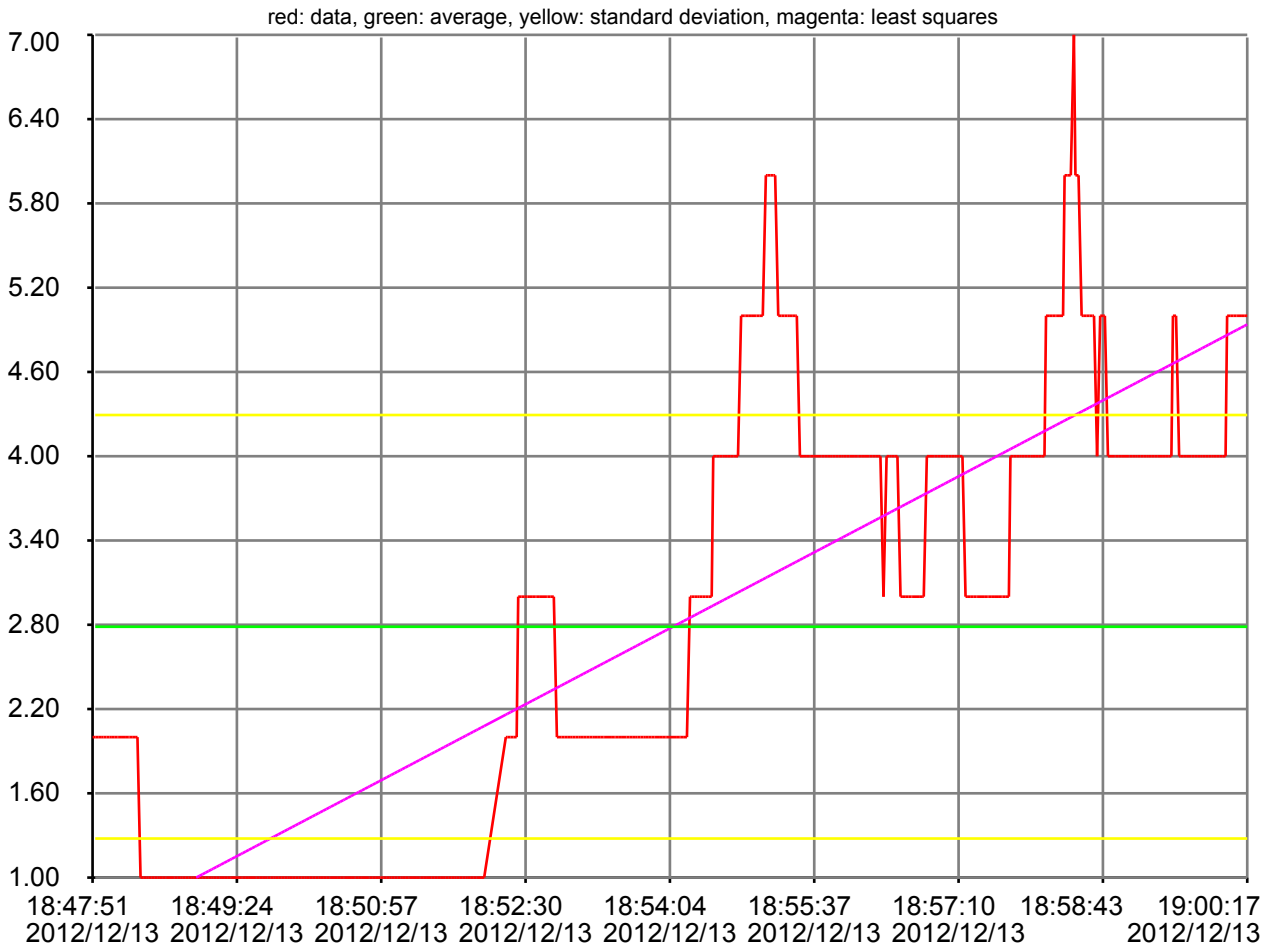


sensor_fuel_level_input





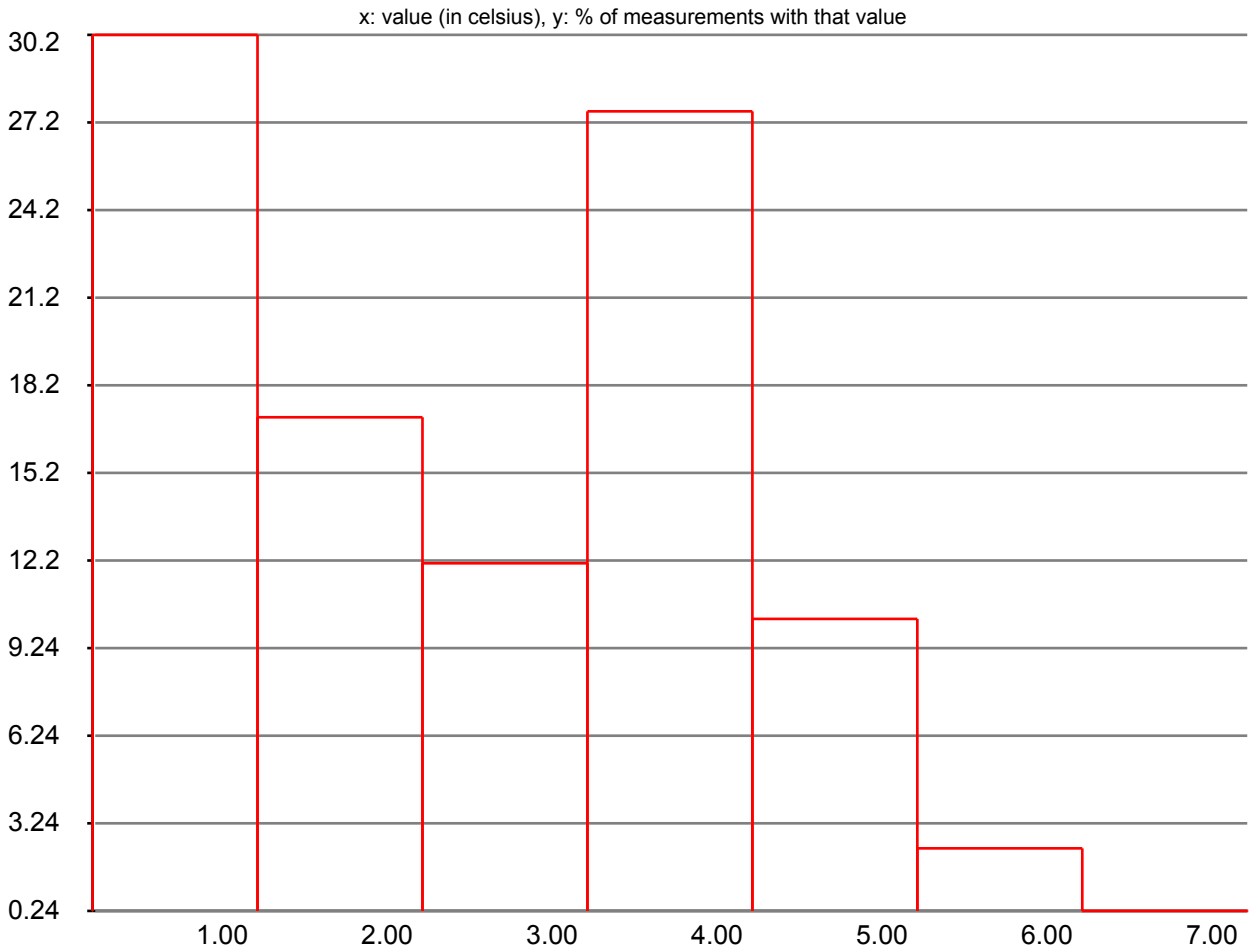
intake air temperature



data type min : -40.000000
data type max : 215.000000
data units : celsius
description : intake air temperature
measurement count: 420
data min : 1.000000
data max : 7.000000
first measurement : Thu, 13 Dec 2012 18:47:51 +0100
last measurement : Thu, 13 Dec 2012 19:00:17 +0100
measuring duration : 00:12:26
average : 2.785714
standard deviation : 1.507690

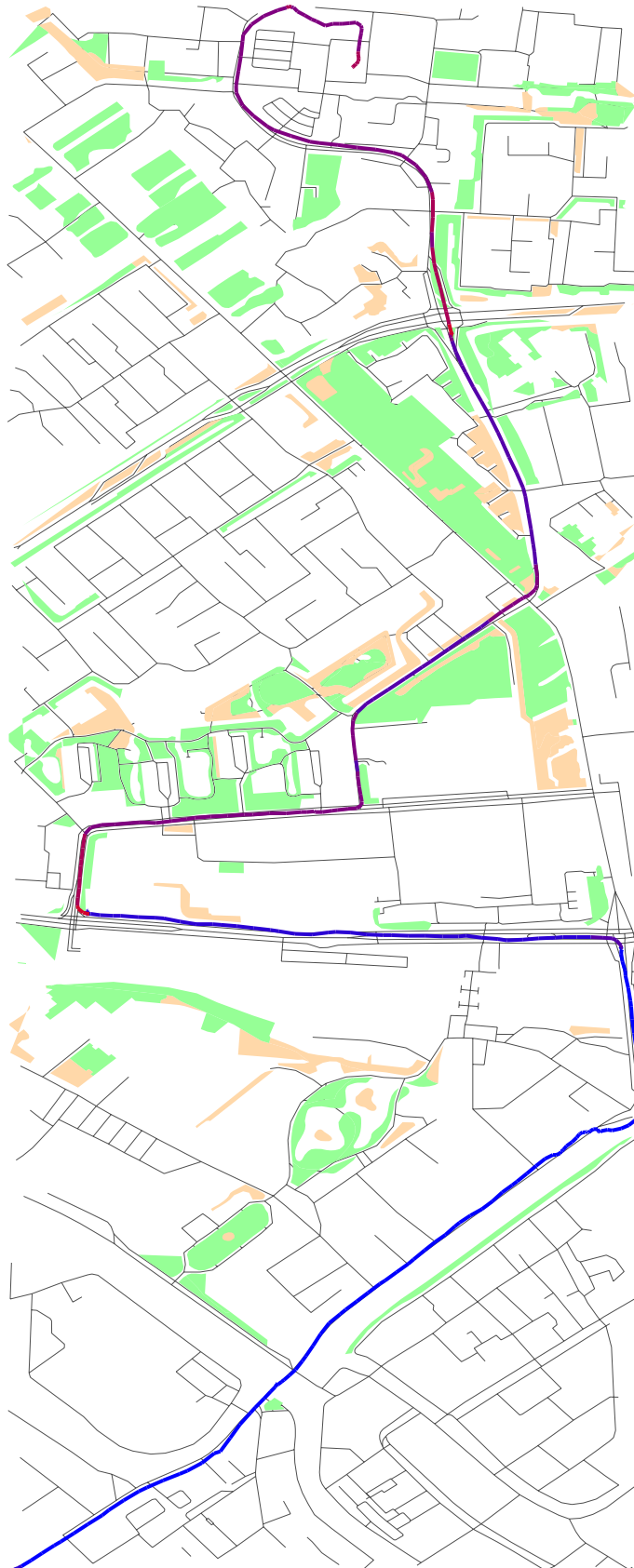


intake air temperature histogram



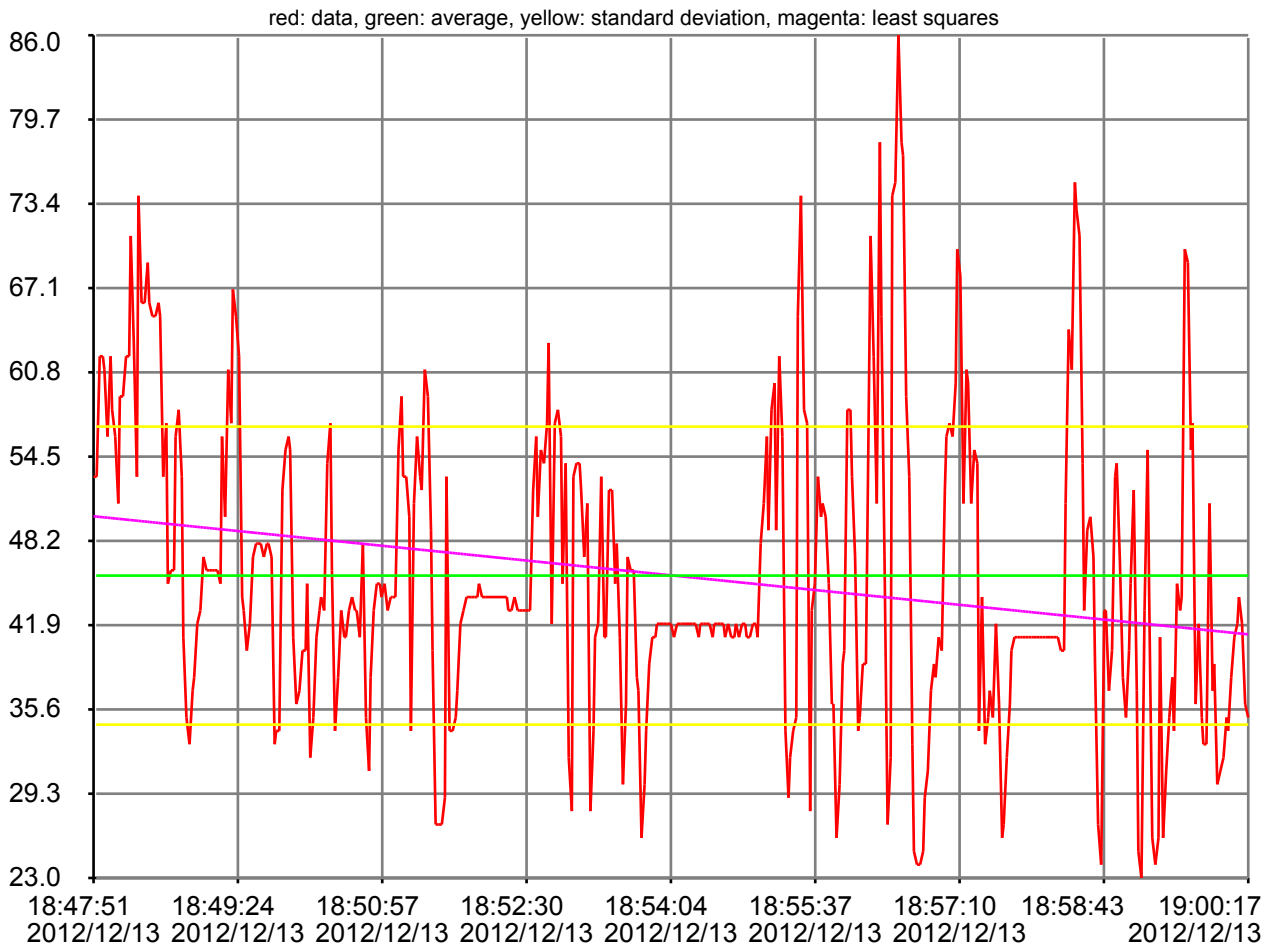


sensor_intake_air_temperature





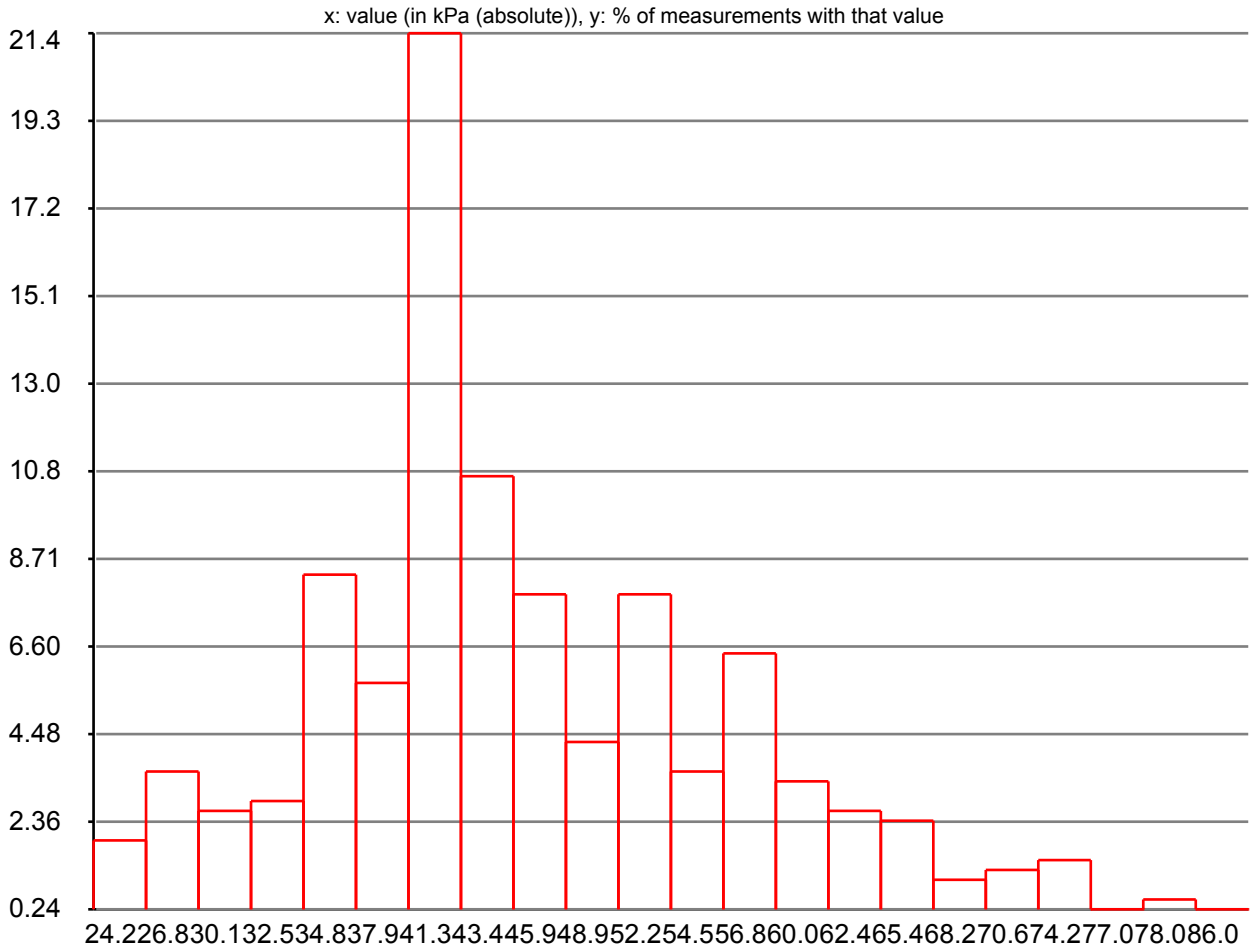
intake manifold absolute pressure



data type min : 0.000000
data type max : 255.000000
data units : kPa (absolute)
description : intake manifold absolute pressure
measurement count: 420
data min : 23.000000
data max : 86.000000
first measurement : Thu, 13 Dec 2012 18:47:51 +0100
last measurement : Thu, 13 Dec 2012 19:00:17 +0100
measuring duration : 00:12:26
average : 45.604762
standard deviation : 11.140273

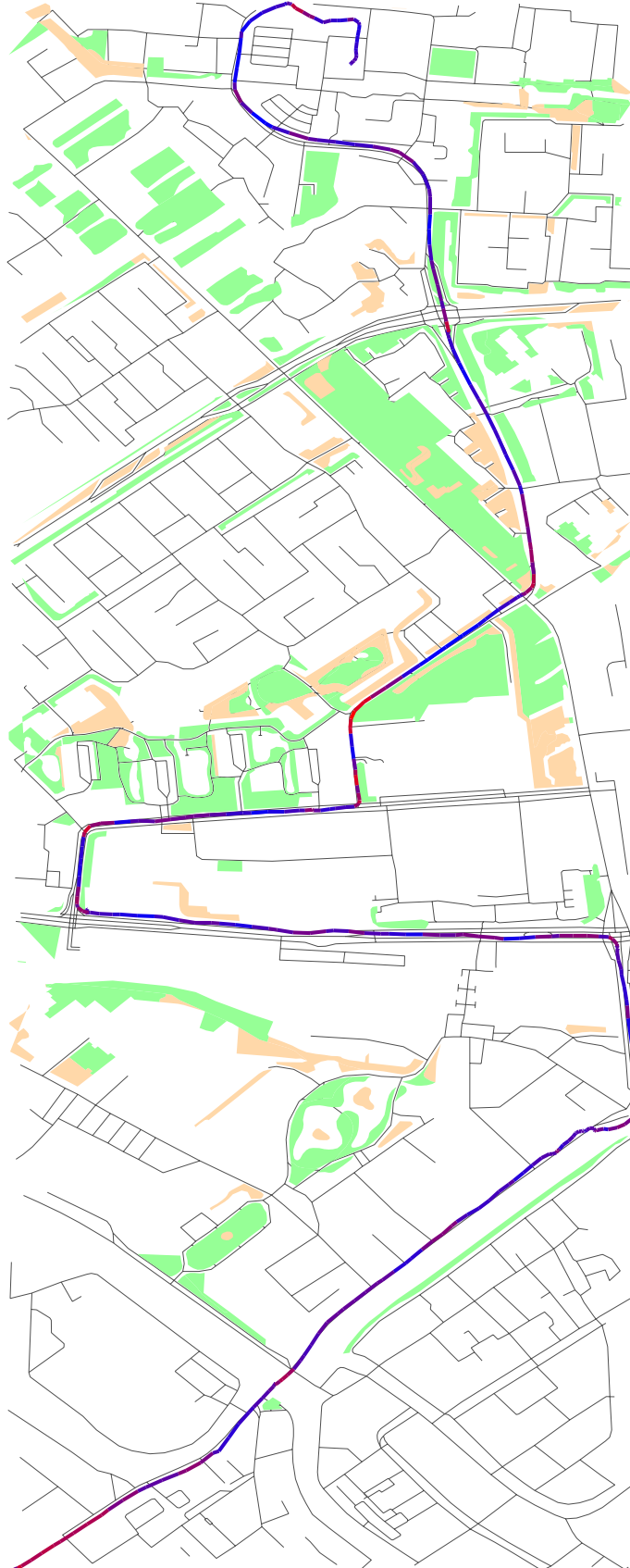


intake manifold absolute pressure histogram



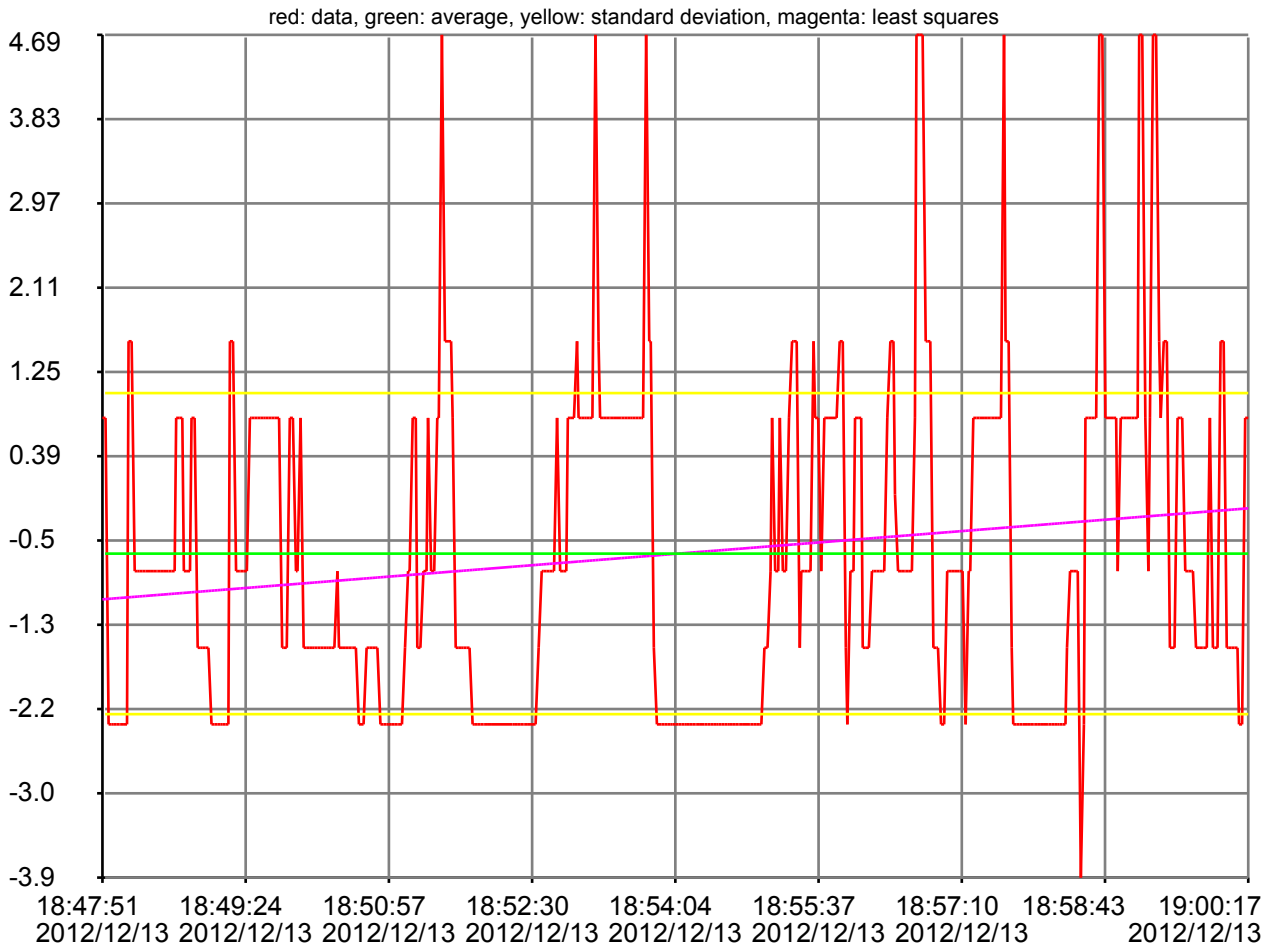


sensor_intake_manifold_abs_pressure





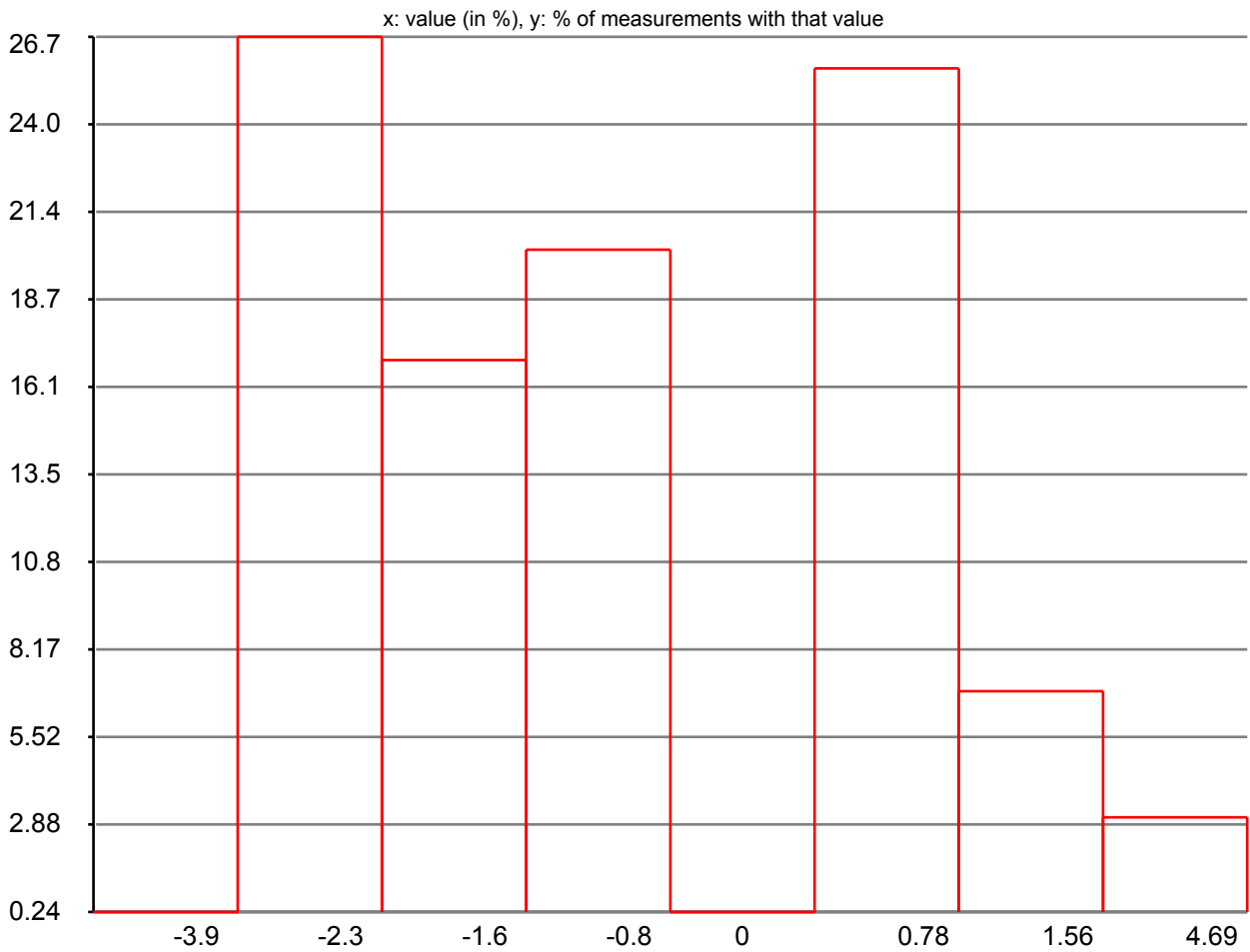
long term fuel bank 1



data type min : -100.000000
data type max : 100.000000
data units : %
description : long term fuel bank 1
measurement count: 420
data min : -3.906250
data max : 4.687500
first measurement : Thu, 13 Dec 2012 18:47:51 +0100
last measurement : Thu, 13 Dec 2012 19:00:17 +0100
measuring duration : 00:12:26
average : -0.602679
standard deviation : 1.637015

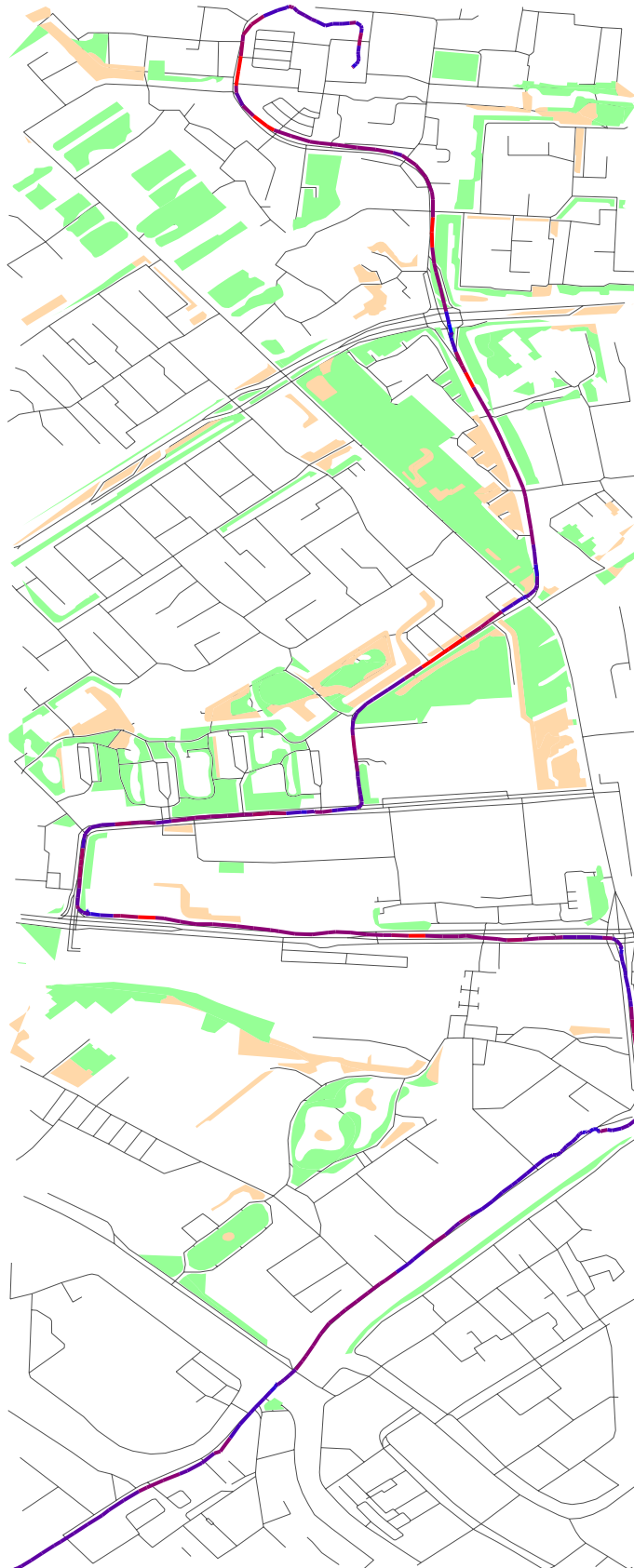


long term fuel bank 1 histogram



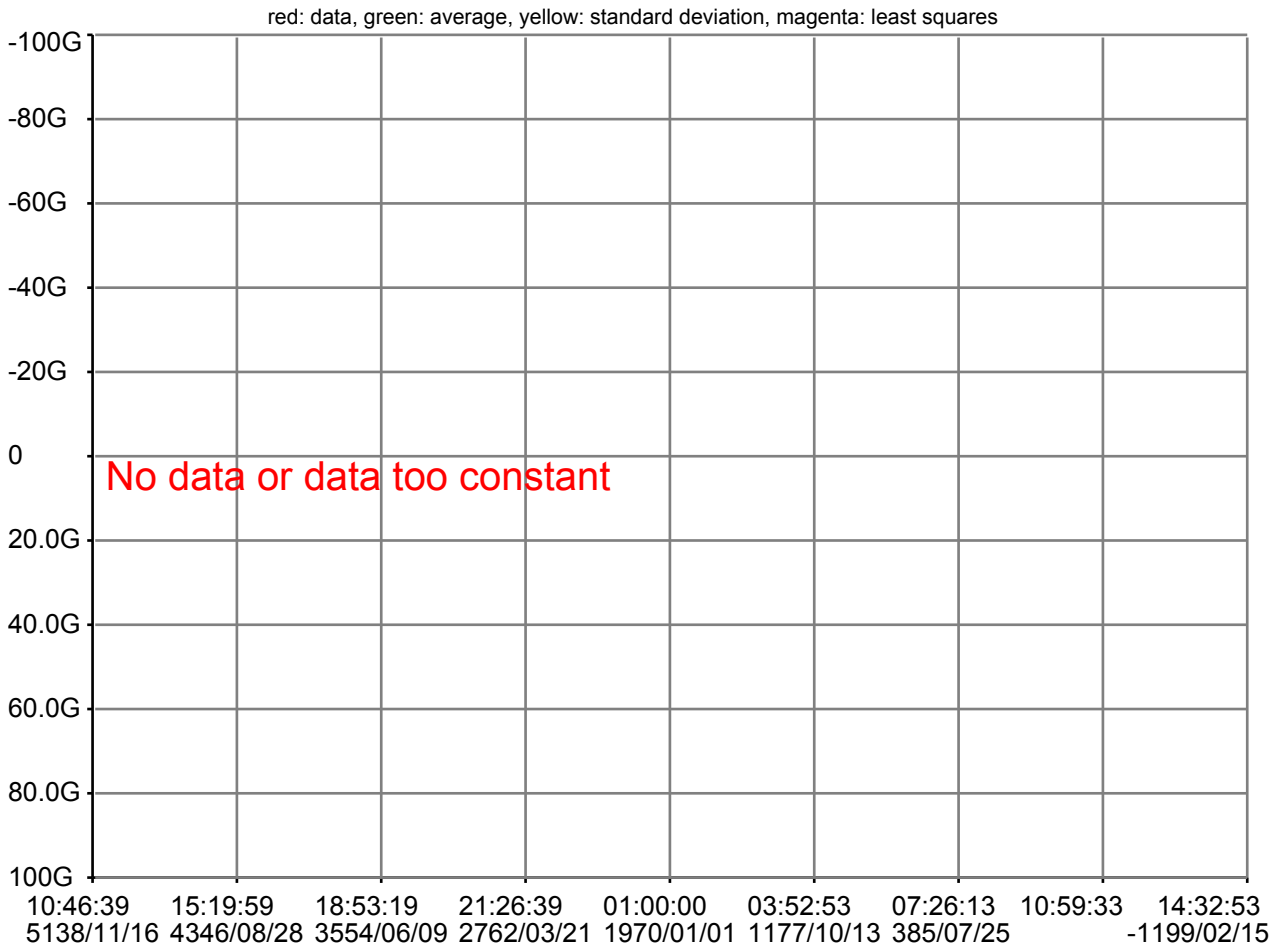


sensor_long_term_fuel_bank1





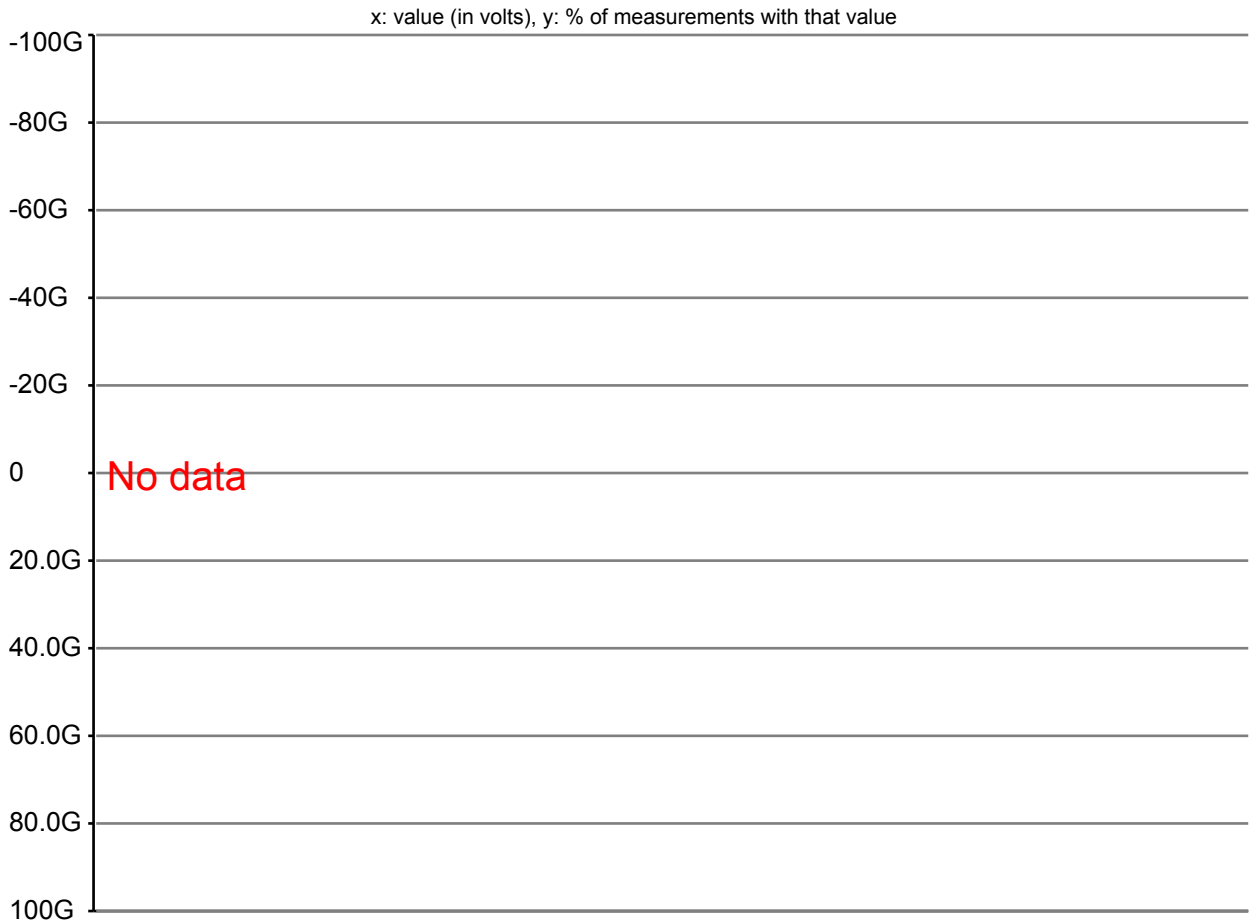
oxygen sensor bank 1 sensor 1



data type min : 0.000000
data type max : 1.275000
data units : volts
description : oxygen sensor bank 1 sensor 1
measurement count : 0

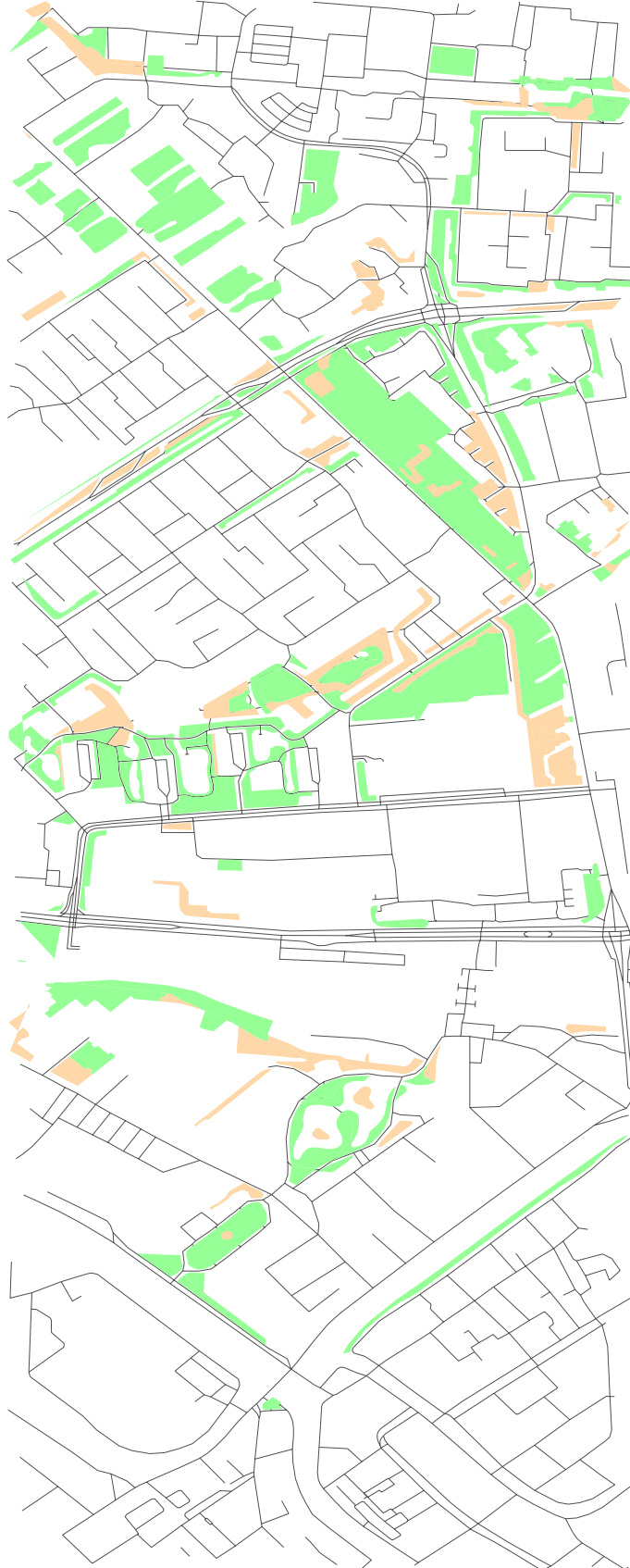


oxygen sensor bank 1 sensor 1 histogram



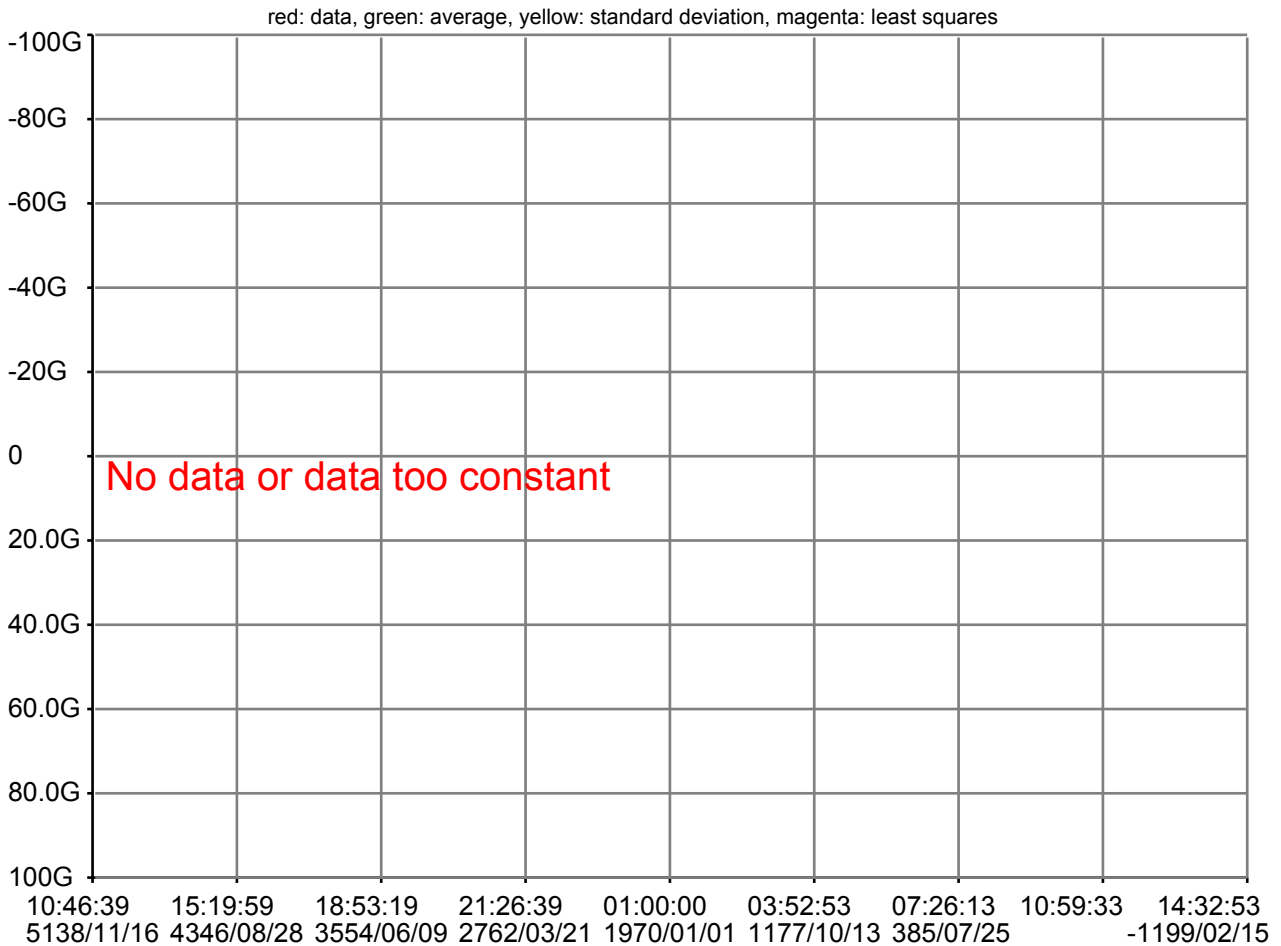


sensor_oxygen_sensor_bank1_sensor1





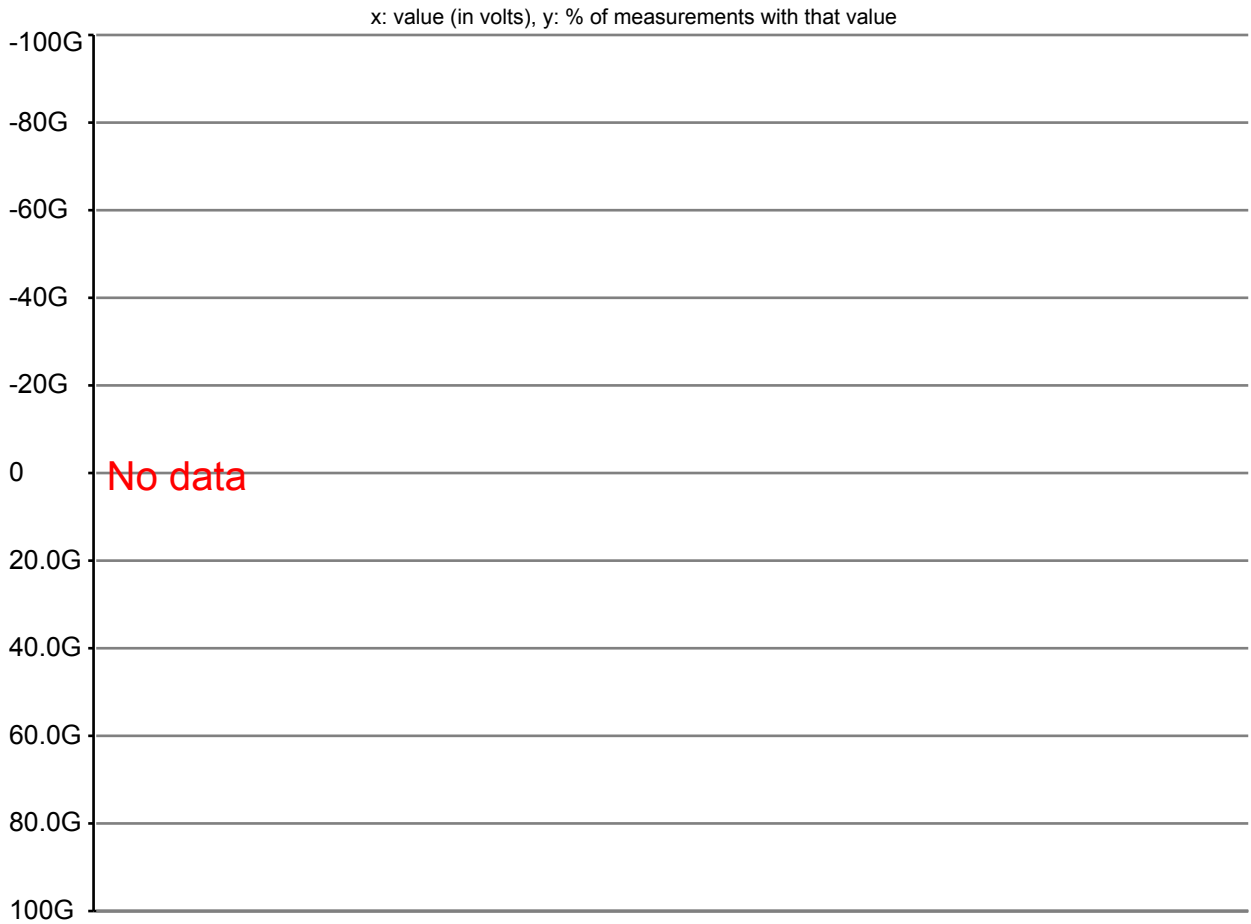
oxygen sensor bank 1 sensor 2



data type min : 0.000000
data type max : 1.275000
data units : volts
description : oxygen sensor bank 1 sensor 2
measurement count : 0

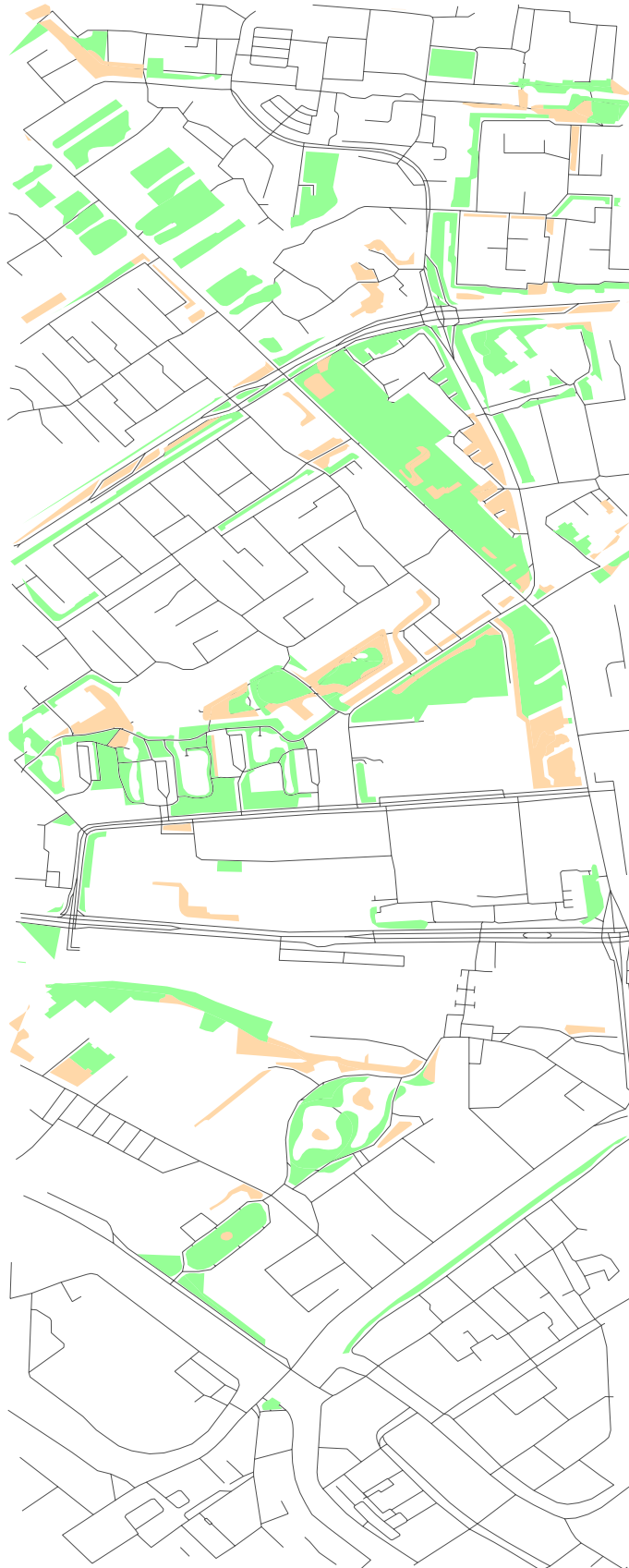


oxygen sensor bank 1 sensor 2 histogram



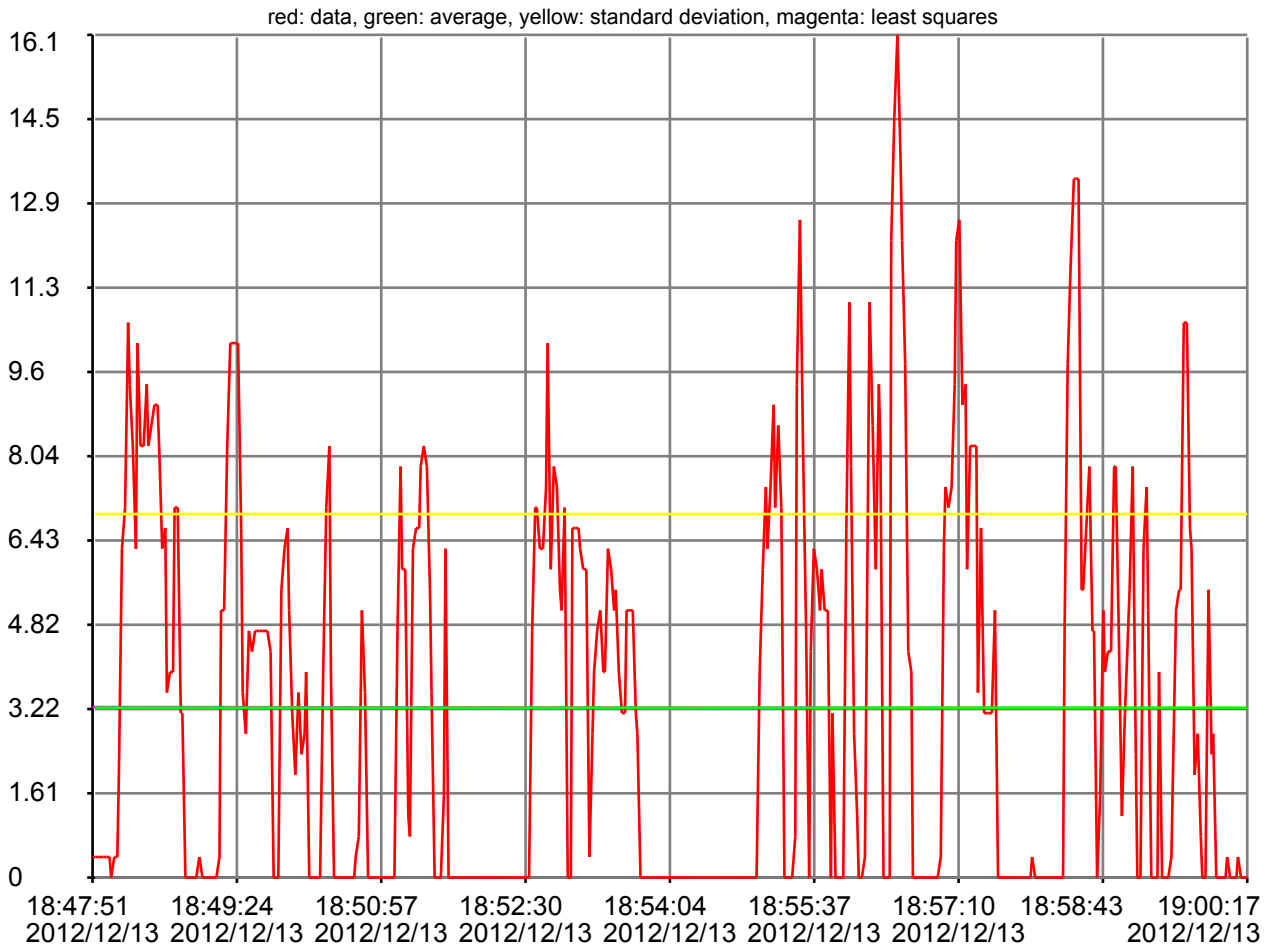


sensor_oxygen_sensor_bank1_sensor2





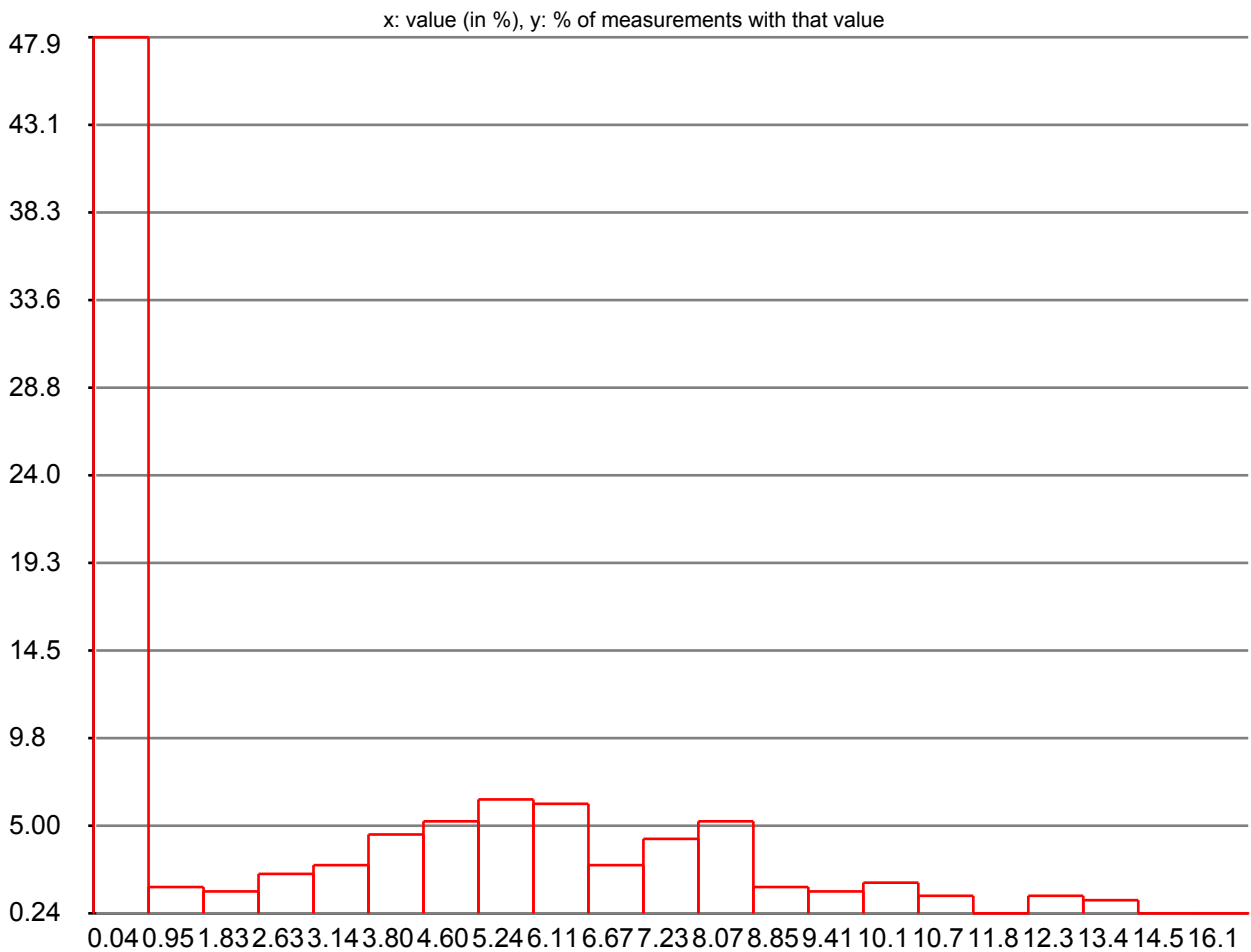
relative throttle position



data type min : 0.000000
data type max : 100.000000
data units : %
description : relative throttle position
measurement count: 420
data min : 0.000000
data max : 16.078430
first measurement : Thu, 13 Dec 2012 18:47:51 +0100
last measurement : Thu, 13 Dec 2012 19:00:17 +0100
measuring duration : 00:12:26
average : 3.240896
standard deviation : 3.694632

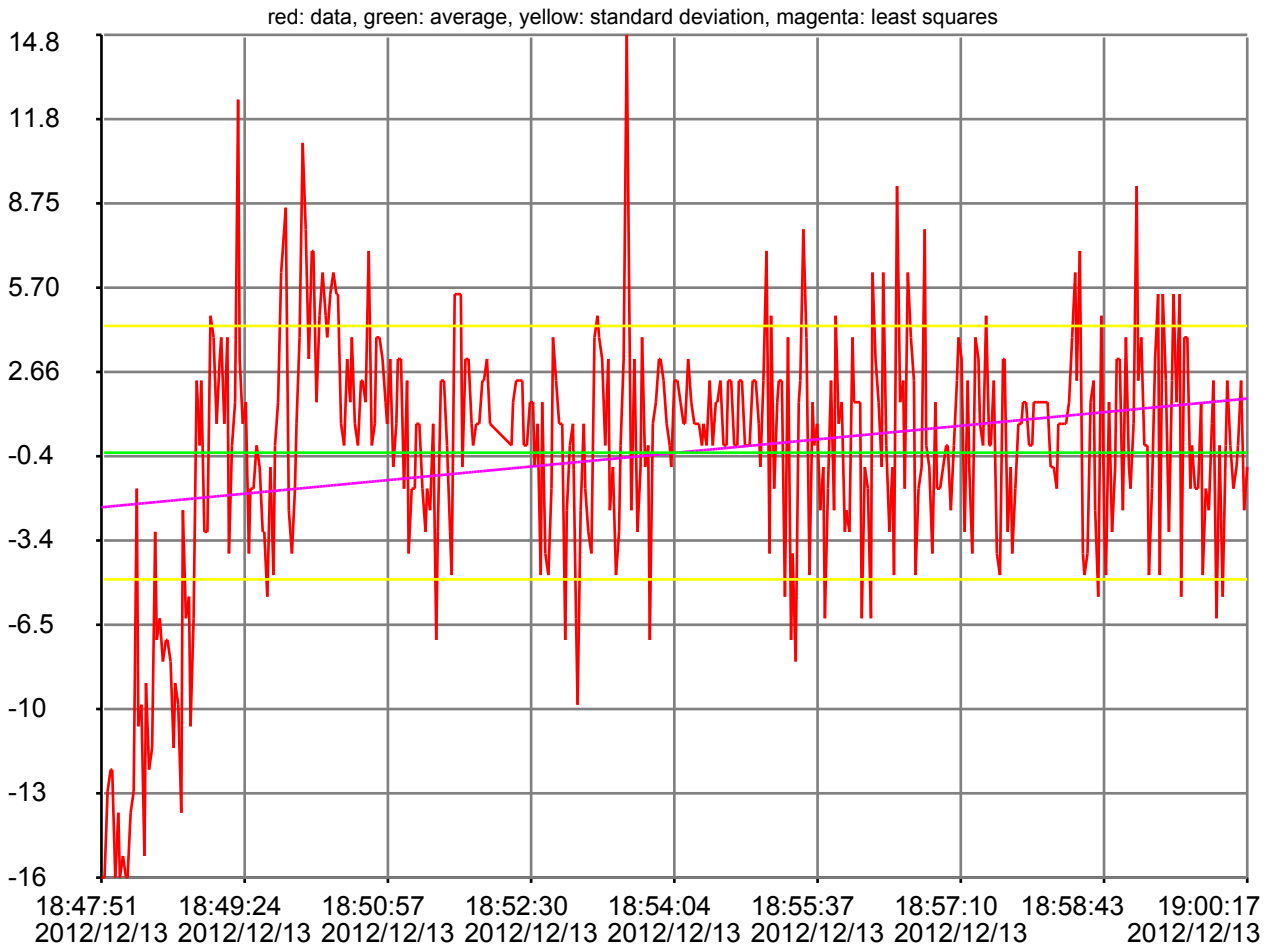


relative throttle position histogram





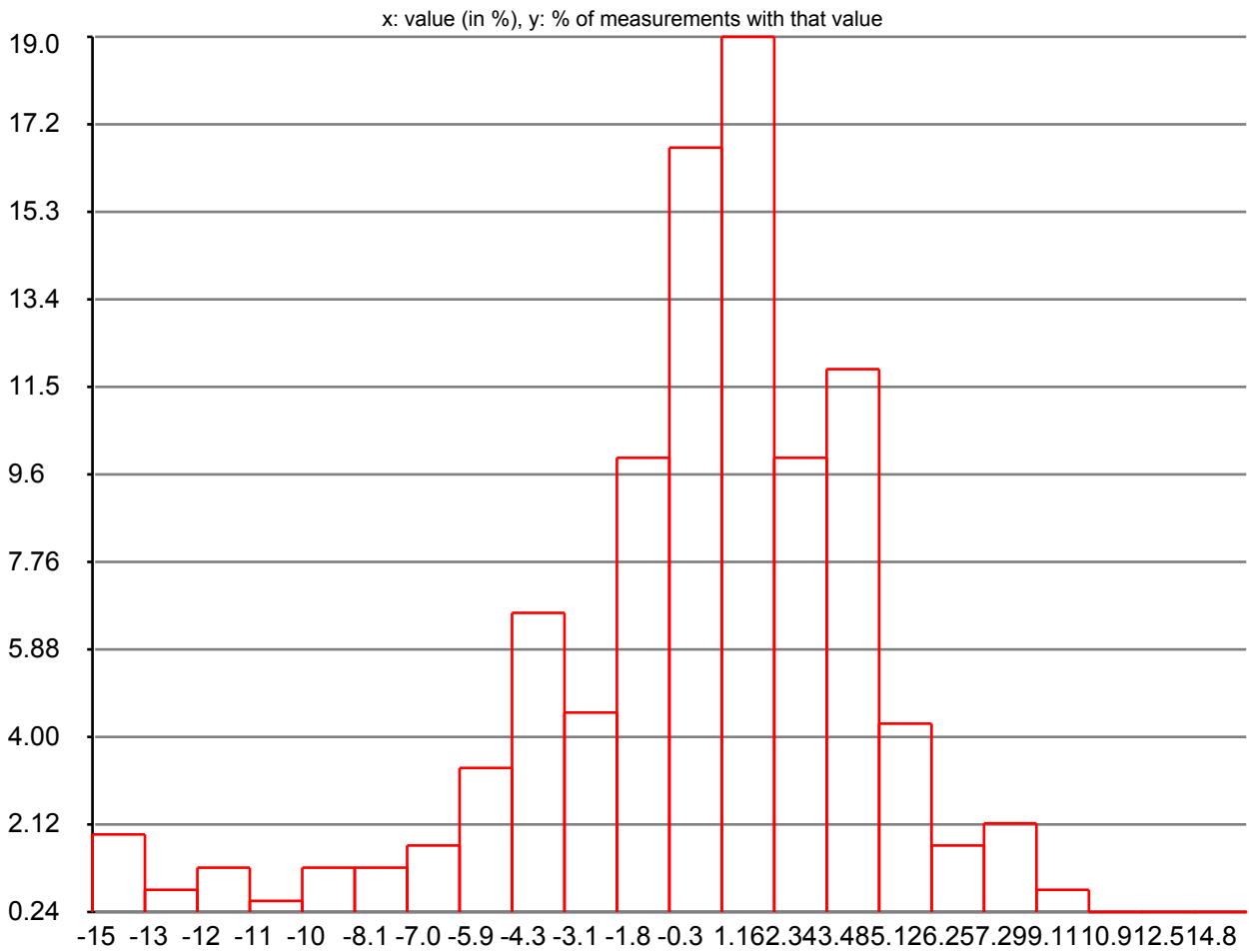
short term fuel bank 1



data type min : -100.000000
data type max : 100.000000
data units : %
description : short term fuel bank 1
measurement count: 420
data min : -15.625000
data max : 14.843750
first measurement : Thu, 13 Dec 2012 18:47:51 +0100
last measurement : Thu, 13 Dec 2012 19:00:17 +0100
measuring duration : 00:12:26
average : -0.262277
standard deviation : 4.582096
fuel trim > 10% : for 5.48% of all measurements

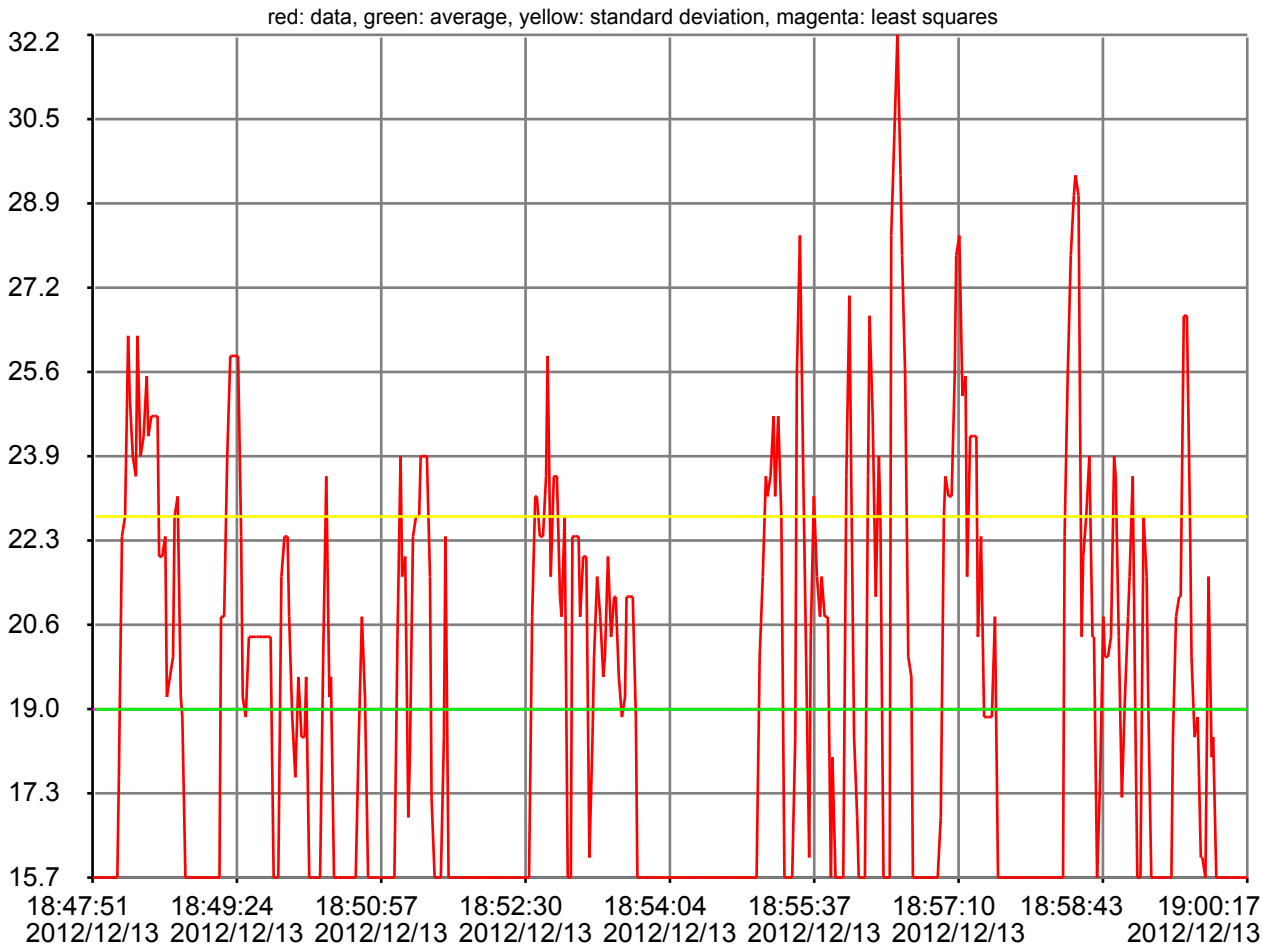


short term fuel bank 1 histogram





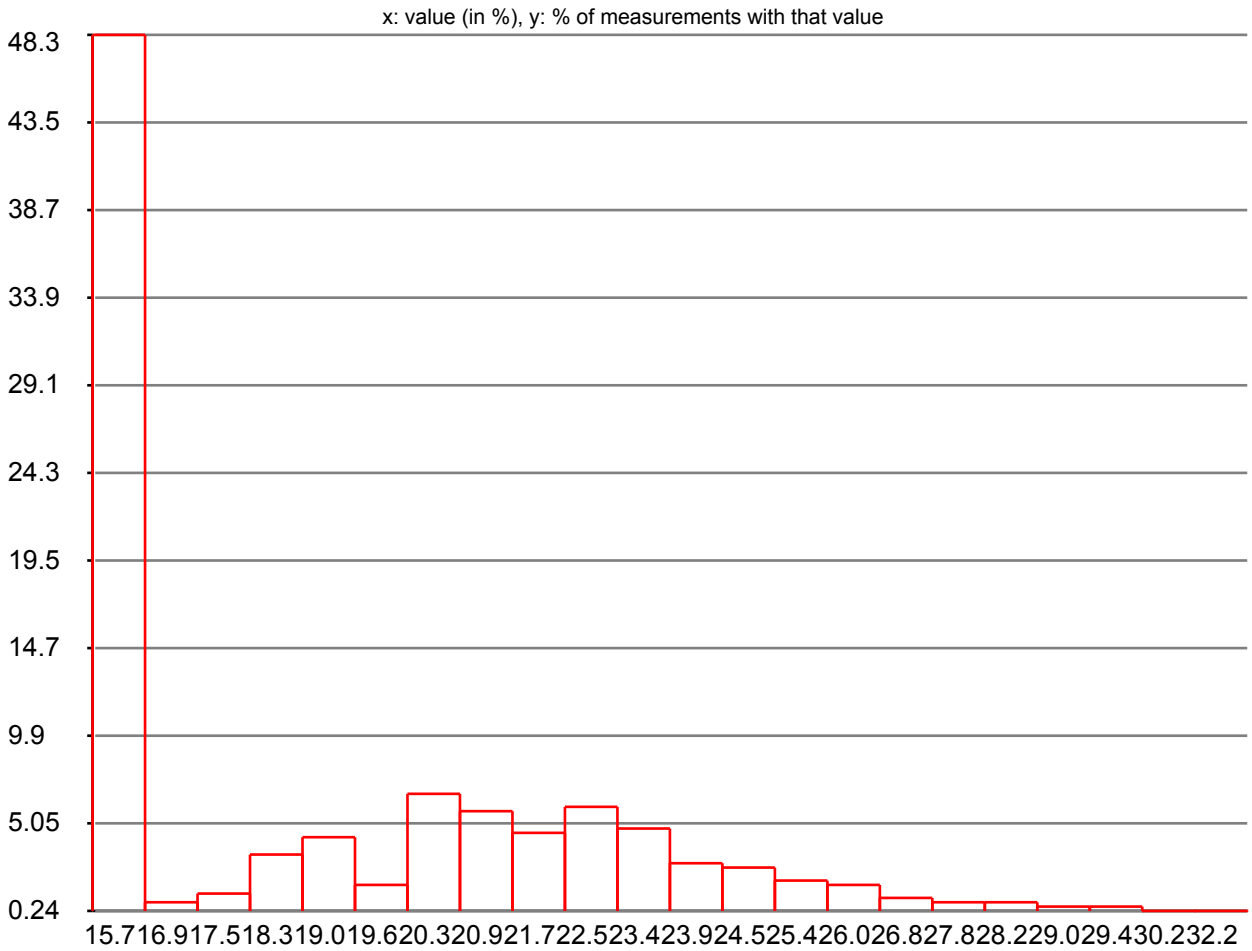
throttle



data type min : 0.000000
data type max : 100.000000
data units : %
description : throttle
measurement count: 420
data min : 15.686270
data max : 32.156860
first measurement : Thu, 13 Dec 2012 18:47:51 +0100
last measurement : Thu, 13 Dec 2012 19:00:17 +0100
measuring duration : 00:12:26
average : 18.972920
standard deviation : 3.770143

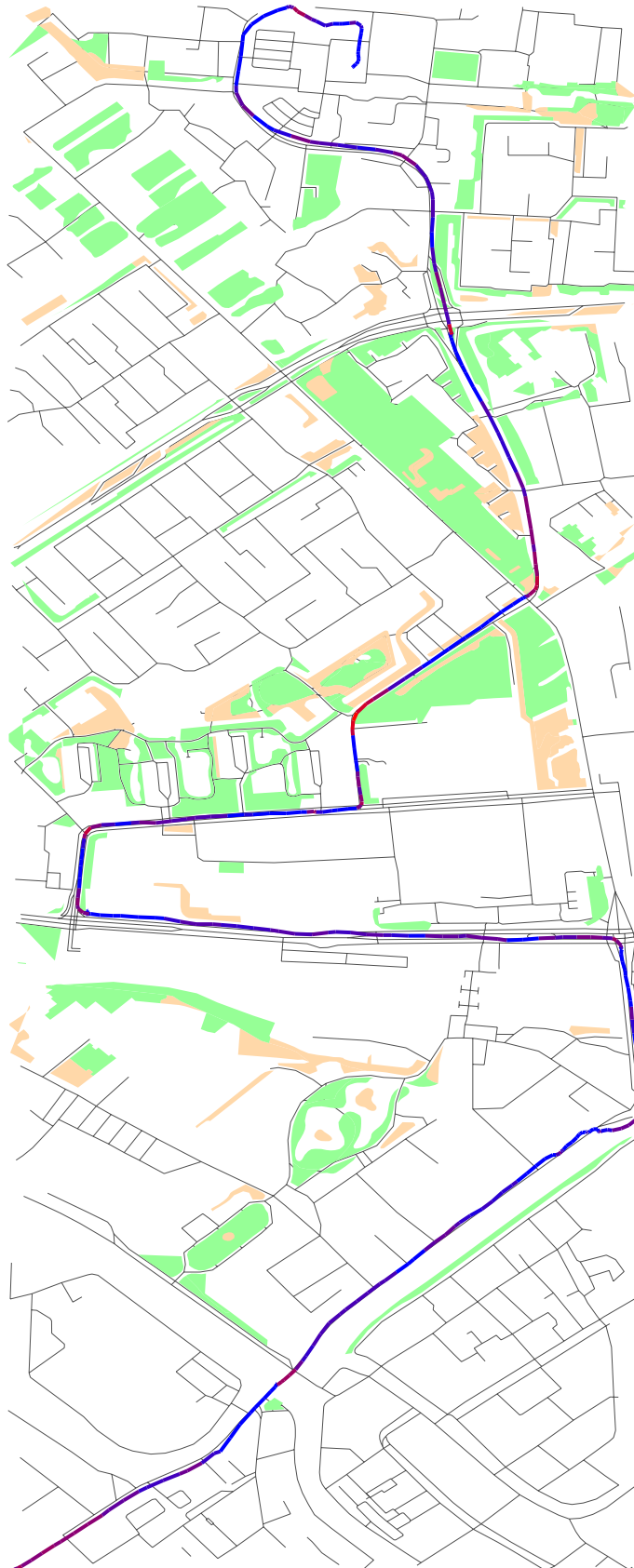


throttle histogram



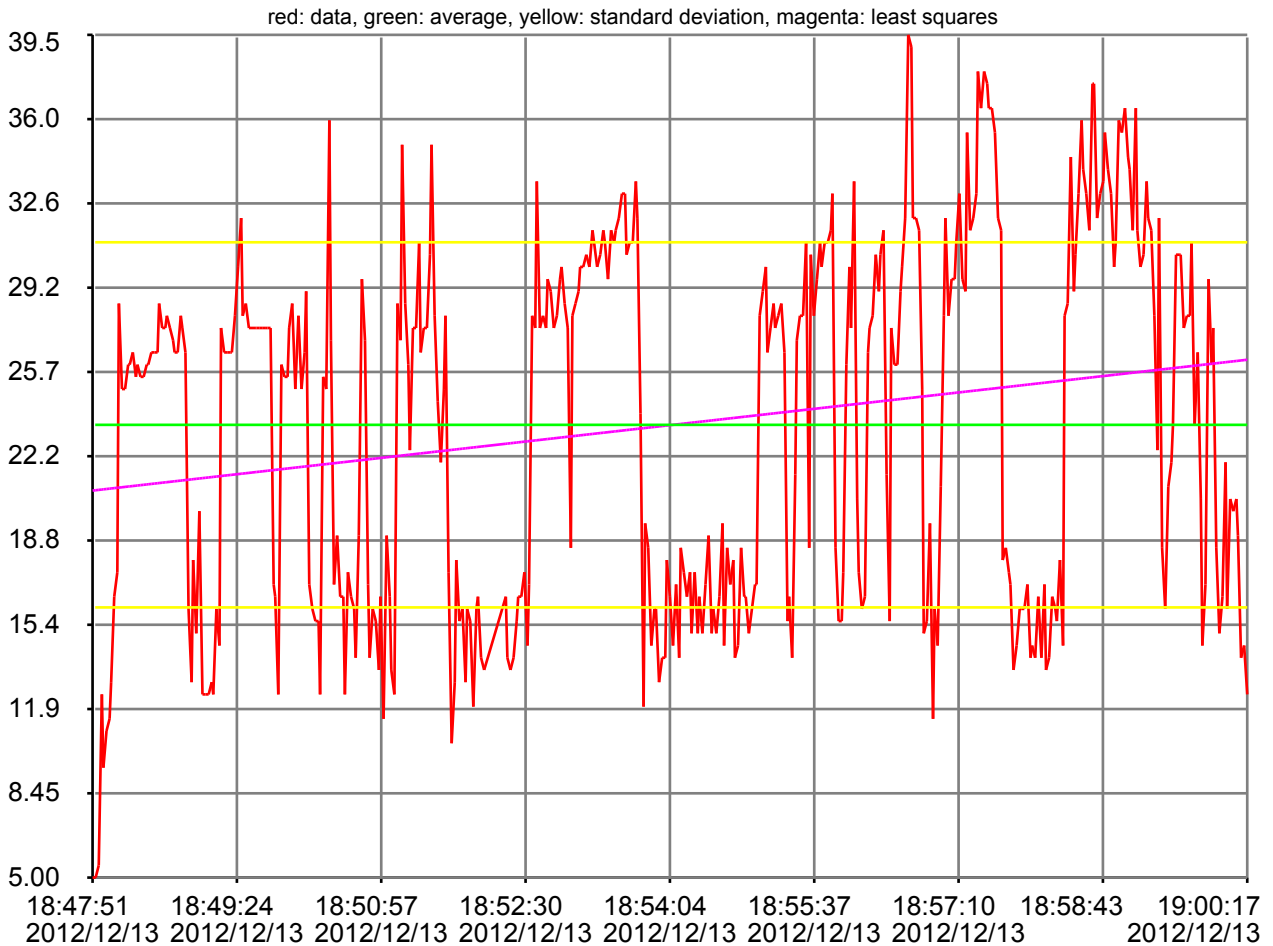


sensor_throttle





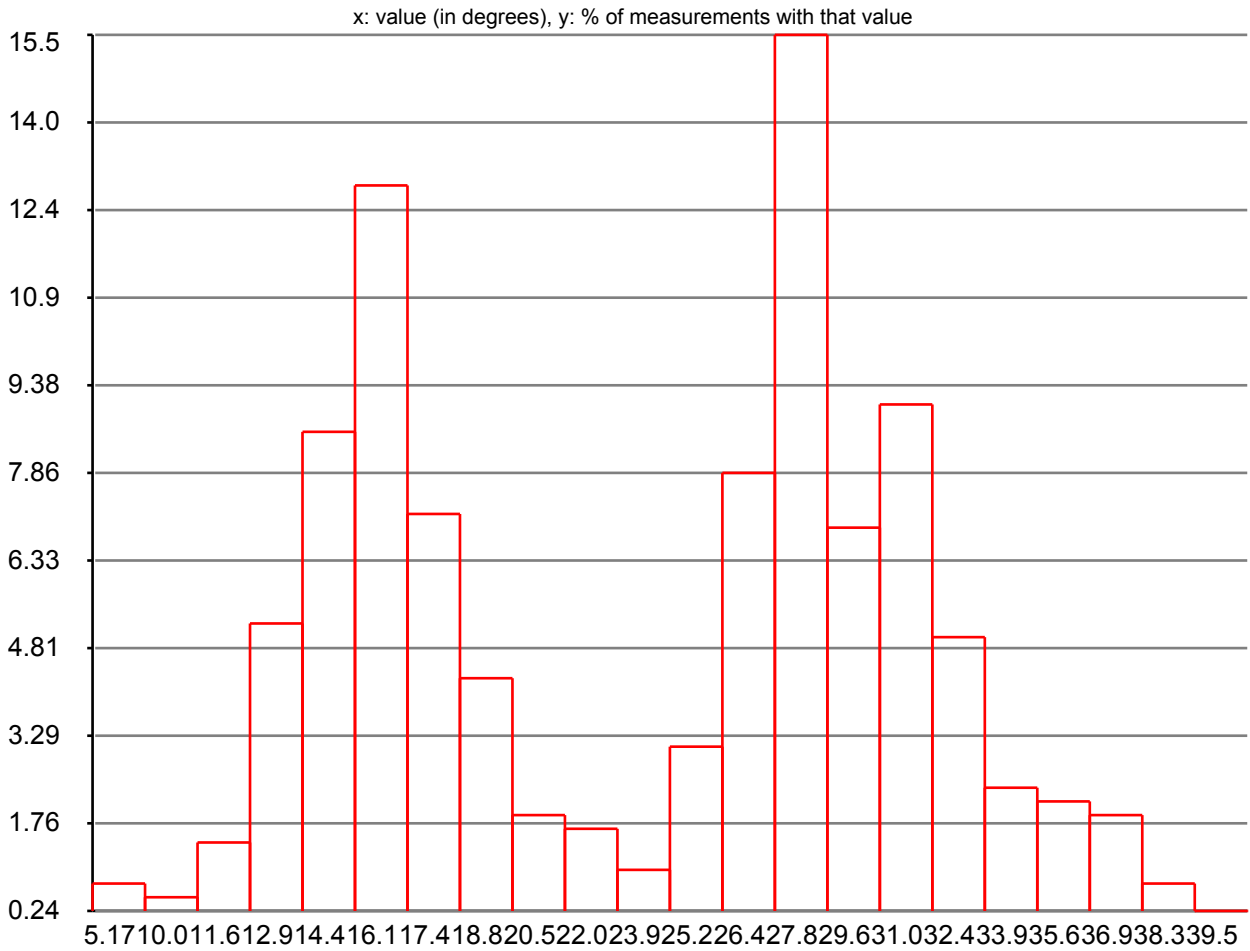
timing advance



data type min : -64.000000
data type max : 63.500000
data units : degrees
description : timing advance
measurement count: 420
data min : 5.000000
data max : 39.500000
first measurement : Thu, 13 Dec 2012 18:47:51 +0100
last measurement : Thu, 13 Dec 2012 19:00:17 +0100
measuring duration : 00:12:26
average : 23.534524
standard deviation : 7.474122

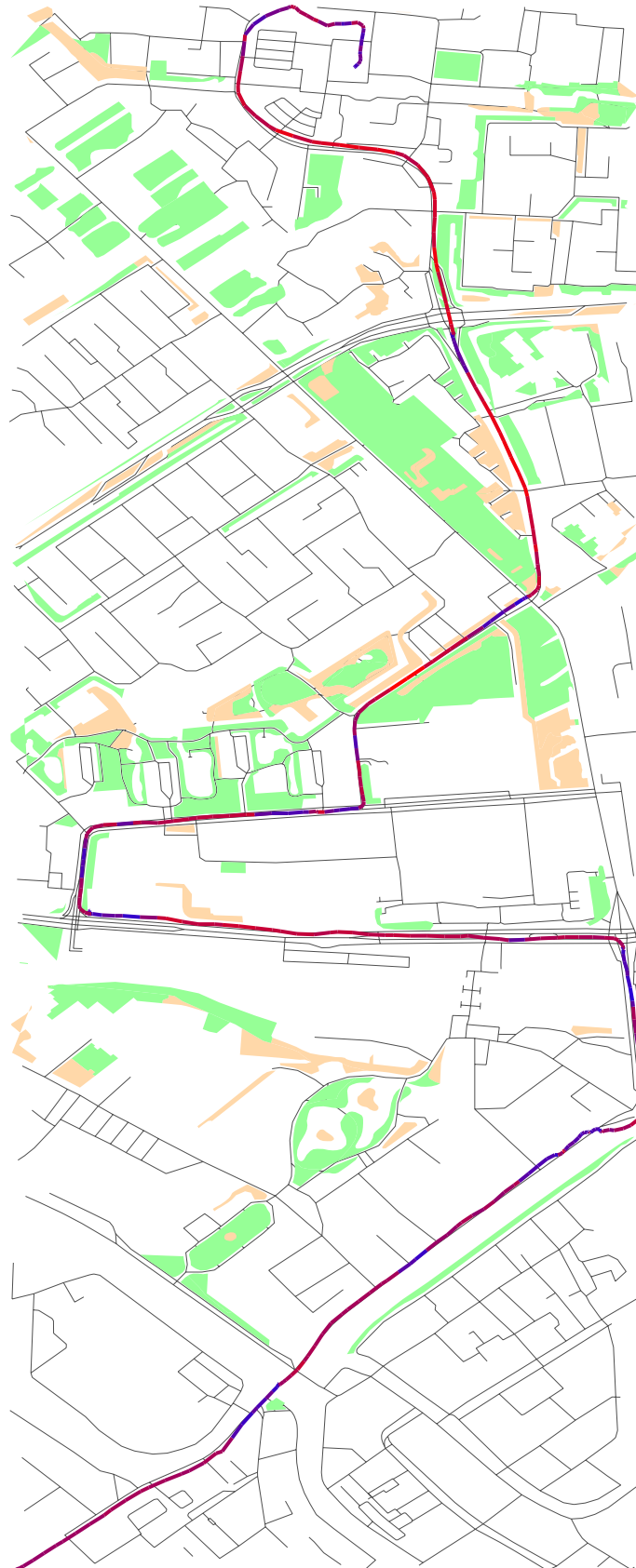


timing advance histogram



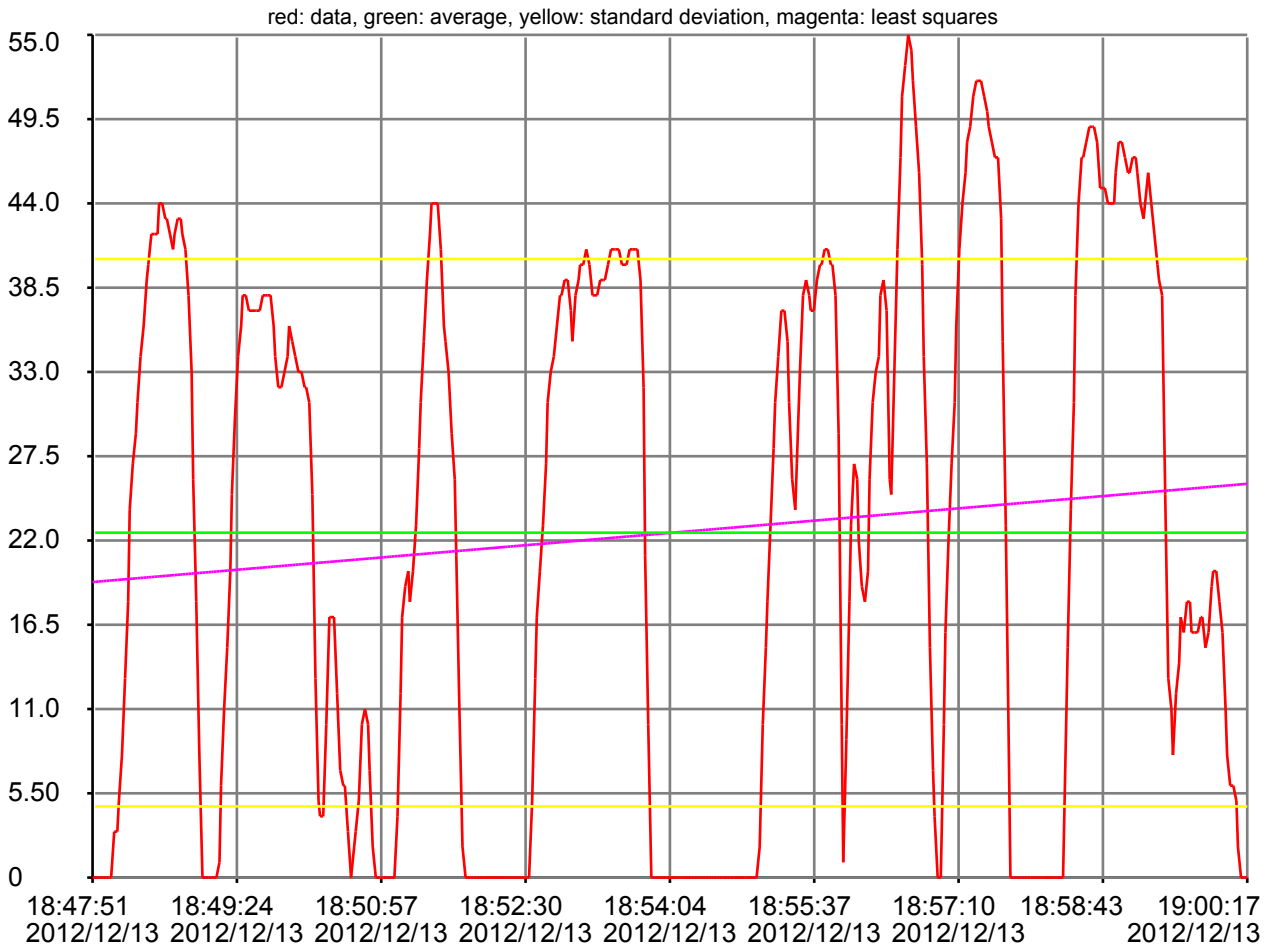


sensor_timing_advance





speed

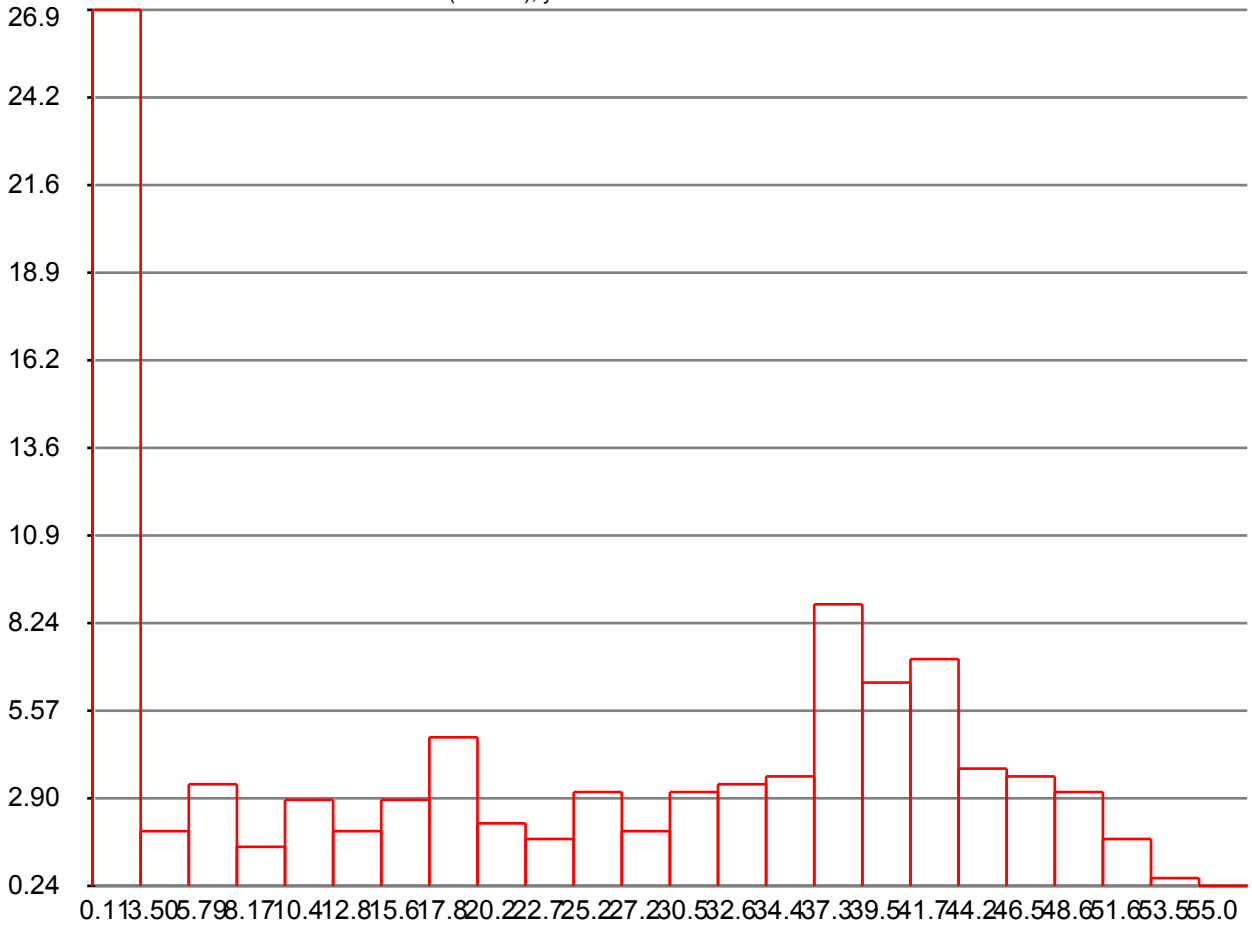


data type min : 0.000000
data type max : 255.000000
data units : km/h
description : speed
measurement count: 420
data min : 0.000000
data max : 55.000000
first measurement : Thu, 13 Dec 2012 18:47:51 +0100
last measurement : Thu, 13 Dec 2012 19:00:17 +0100
measuring duration : 00:12:26
average : 22.509524
standard deviation : 17.865700



speed histogram

x: value (in km/h), y: % of measurements with that value





sensor_vehicle_speed

